



VINYL FENCING & RAILING

ALUMINUM FENCING & RAILING

LED LIGHTING

**durables**<sup>®</sup>

# WORTH THE WEIGHT!

## A letter from the president:

When I first started in the vinyl fencing industry over 20 years ago, it was nearly impossible to tell one vinyl fence from the next. Every reputable manufacturer on the market used high quality, thick, heavyweight vinyl that was made to last a lifetime. However, like everything else over the years, others have gone to great lengths to make their products cheaper, primarily by using less vinyl. In turn, making the material thinner. At Durables, we still manufacture the same high quality, made in the USA, heavy duty vinyl fencing and railing that we did 20 years ago. In fact, our products can be up to 50% heavier/thicker than the competition. Since the thinner/lighter products look similar, it's easy to see why the difference in quality often goes unnoticed until after it's been installed. In the race to make the cheapest product on the market, we will gladly finish last.

When comparing the quality and durability of vinyl fencing, it's important to consider panel weight. The thicker/stronger the panel is, the more it will weigh. To see for yourself, compare the weight of our panels to our competitor's products side-by-side. You'll immediately notice the difference. We'll even send you FREE samples so you can see the difference for yourself!

At Durables®, our mission is to provide a Superior Customer Experience, and it is impossible to provide a superior customer experience without providing superior quality. We made a decision a long time ago to stand by our values and only offer strong, durable products that are guaranteed to last. We back that guarantee up with our lifetime warranty and product support. While almost everyone offers a lifetime warranty these days, the last thing you want is the added cost of having to replace your fencing or railing after it's been installed. We're confident that our products will never fail, due to defect, offering you the peace of mind that your new Durables fencing or railing will last a lifetime.

When it comes time to purchase your new vinyl fencing or railing, remember these two things:

- 1) At Durables, when we say heavy duty, we truly mean it!
- 2) The best products are always WORTH THE WEIGHT!

Sincerely,



Brad Halley  
President

THICKER VINYL =  HEAVIER WEIGHT = SUPERIOR DURABILITY



**OUR BUSINESS HAS BUILT A REPUTATION FOR PROVIDING STRONG AND DURABLE PRODUCTS, OUTSTANDING VALUE AND SUPERIOR CUSTOMER SERVICE.**

Our products are proudly made right here in the USA from heavy-duty, thick vinyl to provide unmatched strength and durability that is guaranteed to last a lifetime.


We take pride in manufacturing premium quality fencing and railing that we can stand behind and that are environmentally friendly.

All of our vinyl products are manufactured from 85% recycled materials and are 100% recyclable. They are also BPA free and free of toxic VOC stain and preservatives used to treat and maintain wood fencing.

At Durables®, we stand behind everything we make, and we'll be here for you before, during and after your purchase with our Limited Lifetime Warranty and lifetime implementation support.

## Fencing and railing that's built to last.

At Durables®, *the only thing stronger than our products is the service that comes with them.*™ We offer an extensive line of vinyl fencing and railing. Whether you're looking for a privacy, pool, picket or simply a horse fence, we're sure to have the perfect style to meet your individual needs. We also offer all of the accessories you'll need to truly customize your outdoor space.

Made from the thickest materials in the industry, our fencing and railing can be up to 50% stronger than the competition. The proof is in the numbers. Thicker material means a heavier, stronger product. Simply look for the  symbol throughout this brochure to compare the weight of any other panel on the market to one of our panels and you'll immediately see the Durables difference. We offer the strongest, most durable, low-maintenance vinyl fencing and railing anywhere.

Available in White, Tan, Khaki or Gray



- All vinyl fencing and railing made in the USA
- Unique customization available
- High impact
- Low maintenance
- Thick, heavy-duty vinyl
- Won't chip, rot, crack or discolor
- Lifetime implementation support
- Limited Lifetime Warranty



# Privacy Fencing



The perfect backdrop to lush garden plants or lively backyard parties, our privacy fencing offers both seclusion and sophistication. Providing maximum privacy and requiring minimal maintenance, we offer a wide variety of styles from traditional to contemporary to complement virtually any architectural style. To ensure superior strength and durability, the bottom rail is reinforced with aluminum.

**All of our privacy fences 6 feet tall and below can be installed to withstand wind gusts of up to 130 mph.**

## Premium

Our Durables Premium style privacy fences feature a 6" picket with .060 tongue and groove



### The Ashforth®

Height: 4', 5' & 6'  
Width: 6' & 8'  
Picket Style: 7/8" x 6"  
Tongue & Groove .060"  
Color:



### The Canterbury™

Height: 5', 6', 7' & 8'  
Width: 6' & 8'  
Picket Style: 7/8" x 6"  
Tongue & Groove .060"  
Color:



### The Lauderdale™

Height: 5' & 6'  
Width: 6' & 8'  
Picket Style: 7/8" x 13 7/8"  
Interlocking Privacy .060"  
Color:



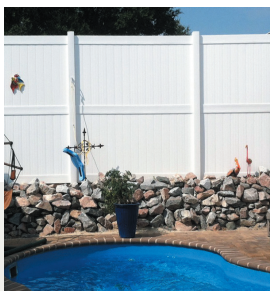
### The Miami™

Height: 5' & 6'  
Width: 6' & 8'  
Picket Style: 7/8" x 13 7/8"  
Interlocking Privacy .060"  
Color:



### The Portsmouth™

Height: 5', 6', 7' & 8'  
Width: 6' & 8'  
Picket Style: 7/8" x 6"  
Tongue & Groove .060"  
(accents 7/8" x 1.5")  
Color:



### The Newport™

Height: 6', 7' & 8'  
Width: 6' & 8'  
Picket Style: 7/8" x 6"  
Tongue & Groove .060"  
Color:



### The Turnbridge®

Height: 5', 6', 7' & 8'  
Width: 6' & 8'  
Picket Style: 7/8" x 6"  
Tongue & Groove .060"  
(accents 7/8" x 1.5")  
Color:



### The Townsend™

Height: 5', 6', 7' & 8'  
Width: 6' & 8'  
Picket Style: 7/8" x 6"  
Tongue & Groove .060"  
(accents 3/4" round black aluminum)  
Color:



### The Briston™

Height: 5', 6', 7' & 8'  
Width: 6' & 8'  
Picket Style: 7/8" x 6"  
Tongue & Groove .060"  
(accents 1.25" x 1.25")  
Color:





## Classic

Our Durables Classic style privacy fences feature a wide-board 11.3" picket with .055" tongue and groove.



### The Wendell™

Height: 4', 5', 6', 7', 8'  
 Width: 6' & 8'  
 Picket Style: 7/8" x 11.3"  
 Tongue & Groove .055"  
 Color:



### The Winchester™

Height: 5', 6', 7', 8'  
 Width: 6' & 8'  
 Picket Style: 7/8" x 11.3"  
 Tongue & Groove .055"  
 Color:   
 v



### The Florence™

Height: 6', 7', 8'  
 Width: 6' & 8'  
 Picket Style: 7/8" x 11.3"  
 Tongue & Groove .055" (accents  
 3/4" round black aluminum)  
 Color:



### The Edith™

Height: 6', 7', 8'  
 Width: 6' & 8'  
 Picket Style: 7/8" x 11.3"  
 Tongue & Groove .055"  
 (accents 7/8" x 1.5")  
 Color:



### The Edmonton™

Height: 6' & 8'  
 Width: 6' & 8'  
 Picket Style: 7/8" x 11.3"  
 Tongue & Groove .055"  
 (accents 7/8" x 1.5")  
 Color:



### The Cyrus™

Height: 6', 7', 8'  
 Width: 6' & 8'  
 Picket Style: 7/8" x 11.3"  
 Tongue & Groove .055"  
 (accents 1.25" x 1.25")  
 Color:

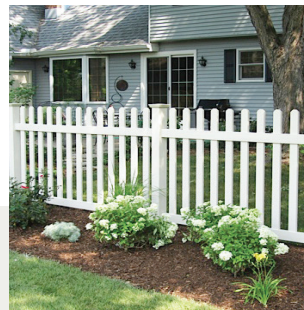




# Picket Fencing

Our classic picket fencing can dramatically change the look of your yard, adding beauty and warmth to the landscape. From simple straight-top to decorative scalloped-top designs, you'll find a wide selection of styles to suit your tastes. Plus, with a Durables® fence, you are assured years of durable performance and maintenance-free satisfaction.

A simple solution that adds ornamental style to your landscape.



## The Burton™

Height: 3', 4' & 5'  
 Width: 6' & 8'  
 Picket Style: 7/8" x 3"  
 Picket Caps: Dogear or Spade (3" picket spacing)  
 Bottom Rail: 1.5" x 5.5"  
 Color:

35 lb<sup>1</sup>

## The Grantham™

Height: 3', 4' & 5'  
 Width: 6' & 8'  
 Picket Style: 7/8" x 3"  
 Picket Caps: Dogear or Spade (3" picket spacing)  
 Bottom Rail: 1.5" x 5.5"  
 Color:

35 lb<sup>1</sup>

## The Murton™

Height: 3', 4' & 5'  
 Width: 6' & 8'  
 Picket Style: 7/8" x 3"  
 Picket Caps: Dogear or Spade (3" picket spacing)  
 Bottom Rail: 2" x 3.5"  
 Color:

36 lb<sup>1</sup>

## The Darlington™

Height: 3', 4' & 5'  
 Width: 6' & 8'  
 Picket Style: 7/8" x 3"  
 Picket Caps: Dogear or Spade (3" picket spacing)  
 Bottom Rail: 2" x 3.5"  
 Color:

36 lb<sup>1</sup>



## The Sudbury™

Height: 3', 4' & 5'  
 Width: 6' & 8'  
 Picket Style: 7/8" x 3"  
 Picket Caps: Dogear or Spade (1.7" picket spacing)  
 Bottom Rail: 2" x 3.5"  
 Color:

41 lb<sup>1</sup>

## The Rochdale™

Height: 3', 4' & 5'  
 Width: 6' & 8'  
 Picket Style: 7/8" x 3"  
 Picket Caps: Dogear or Spade (1.7" picket spacing)  
 Bottom Rail: 2" x 3.5"  
 Color:

41 lb<sup>1</sup>

## The Milano™

Height: 3' & 4'  
 Width: 6' & 8'  
 Picket Style: 1.5" x 1.5"  
 Picket Caps: Spade (2" picket spacing)  
 Bottom Rail: 2" x 6"  
 Color:

45 lb<sup>1</sup>

Picket Fencing continued on next page >>





## The Preston™

Height: 3', 4' & 5'  
 Width: 6' & 8'  
 Picket Style: 7/8" x 1.5"  
 Picket Caps: Spade  
 (3.7" picket spacing)  
 Bottom Rail: 2" x 3.5"  
 Color:



## The Stanley™

Height: 3', 4' & 5'  
 Width: 6' & 8'  
 Picket Style: 7/8" x 1.5"  
 Picket Caps: Spade  
 (3.7" picket spacing)  
 Bottom Rail: 2" x 3.5"  
 Color:



## The Durham™

Height: 3', 4' & 5'  
 Width: 6' & 8'  
 Picket Style: 7/8" x 1.5"  
 Picket Caps: Spade  
 (1.7" picket spacing)  
 Bottom Rail: 2" x 3.5"  
 Color:



## The Ashborne™

Height: 3', 4' & 5'  
 Width: 6' & 8'  
 Picket Style: 7/8" x 1.5"  
 Picket Caps: Spade  
 (1.7" picket spacing)  
 Bottom Rail: 2" x 3.5"  
 Color:



## The Classic™

Height: 3' & 4'  
 Width: 6' & 8'  
 Picket Style: 1.5" x 1.5"  
 Picket Caps: Spade  
 (2" picket spacing)  
 Bottom Rail: 2" x 6"  
 Color:



A swimming pool with a white fence and green trees in the background. The text is overlaid on the image.

**DURABLES<sup>®</sup>**  
**POOL FENCING:**  
**OFFERING SAFETY**  
**AND PEACE OF MIND**  
**FOR YOUR FAMILY.**

**FREE SHIPPING**

A MINIMUM ORDER APPLIES



# Pool Fencing



Surround your patio, pool or lawn with one of our eye-catching pool fences. These attractive designs add a sense of style to any landscape. While perfect around pools, our pool fencing also looks great in any area of your yard. Our exclusive manufacturing process ensures that all of our vinyl products are resistant to water and humidity for lasting beauty. Our pool style gates include self-closing hinges and a pool safety latch. Plus, the bottom rail is reinforced with aluminum to ensure superior strength.

A beautiful finish that always looks new and resists water and humidity.



## The Waldston™

Height: 4' & 5'(w/ Mid-Rail)  
 Width: 6' & 8'  
 Picket Style: 7/8" x 3"  
 (3.7" picket spacing)  
 Color:



## The Gillingham™

Height: 4' & 5'(w/ Mid-Rail)  
 Width: 6' & 8'  
 Picket Style: 7/8" x 1.5"  
 (3.7" picket spacing)  
 Color:



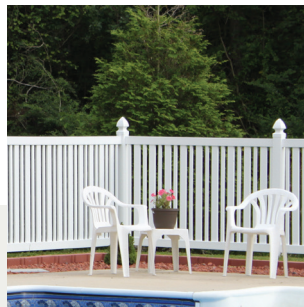
## The Stanton™

Height: 4' & 5'(w/ Mid-Rail)  
 Width: 6' & 8'  
 Picket Style: 7/8" x 3"  
 (1.7" picket spacing)  
 Color:



## The Harwich™

Height: 4' & 5'(w/ Mid-Rail)  
 Width: 6' & 8'  
 Picket Style: 7/8" x 1.5"  
 (1.7" picket spacing)  
 Color:



## The Cargill™

Height: 4' & 5'(w/ Mid-Rail)  
 Width: 6' & 8'  
 Picket Style: 7/8" x 3" &  
 7/8" x 1.5" alternating  
 (3.7" picket spacing)  
 Color:



## The Austell™

Height: 4' & 5'(w/ Mid-Rail)  
 Width: 6' & 8'  
 Picket Style: 7/8" x 3" &  
 7/8" x 1.5" alternating  
 (1.7" picket spacing)  
 Color:



## The Reading™

Height: 4' & 5'(w/ Mid-Rail)  
 Width: 6' & 8'  
 Picket Style: 7/8" x 3"  
 (0.6" picket spacing)  
 Color:



Color Options: White:  Tan:  Khaki:

<sup>1</sup>Average weight noted is for a 4'x8' panel.





**FREE SHIPPING**  
A MINIMUM ORDER APPLIES





# Semi-Privacy Fencing

Our semi-privacy fencing offers just the right amount of seclusion for homeowners who want privacy without complete isolation. The pickets used in our semi-privacy fences slide through the routed rails for a true multi-dimensional look. The superior strength and durability of our fence are due in part to the fact that the bottom rail is reinforced with an aluminum insert.

Just the right amount of seclusion and style.



## The Milton®

Height: 5' & 6'  
 Width: 6' & 8'  
 Picket Style: 7/8" x 3"  
 (7/8" picket spacing)  
 Color:



## The Harlow®

Height: 5' & 6'  
 Width: 6' & 8'  
 Picket Style: 7/8" x 3"  
 & 7/8" x 1.5" alternating  
 (7/8" picket spacing)  
 Color:



## The Grenada™

Height: 5' & 6'  
 Width: 6' & 8'  
 Picket Style: 7/8" x 6"  
 (7/8" picket spacing)  
 Color:



## The Weldon™

Height: 5' & 6'  
 Width: 6' & 8'  
 Picket Style: 7/8" x 3"  
 & 7/8" x 6" alternating  
 (7/8" picket spacing)  
 Color:



## The Fairfax™

Height: 6'  
 Width: 8'  
 Picket Style: 7/8" x 3"  
 horizontal  
 (0.9" picket spacing)  
 Color:



## The Marlow™

Height: 5' & 6'  
 Width: 6' & 8'  
 Picket Style: 7/8" x 6"  
 (7/8 picket spacing)  
 Color:



Color Options: White:  Tan:  Khaki:

<sup>1</sup>Average weight noted is for a 6'x8' panel.



# Horse Fencing

Our horse fencing provides a physical barrier that is visible and safe for horses and livestock. It defines property boundaries, adds value to your estate, is low maintenance and offers superior impact resistance. Choose from elegant styles of durable vinyl fencing paired with best-in-class customer service and lifetime implementation support.

Beautiful, durable and top-grade quality.



## 2 Rail

Post: 5" x 5" square post  
 Post Length: 5' & 6'  
 Rail Spacing: 11"  
 Rail Size: 1.5" x 5.5"  
 Color:

## 3 Rail

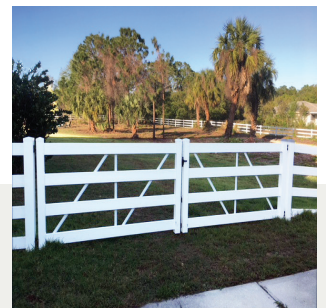
Post: 5" x 5" square post  
 Post Length: 6.5', 7' & 7.5'  
 Rail Spacing: 11"  
 Rail Size: 1.5" x 5.5"  
 Color:

## 4 Rail

Post: 5" x 5" square post  
 Post Length: 7', 7.5' & 8'  
 Rail Spacing: 9"  
 Rail Size: 1.5" x 5.5"  
 Color:

## Cross Buck

Post: 5" x 5" square post  
 Post Length: 7', 7.5' & 8'  
 Rail Size: 1.5" x 5.5"  
 Color:



## 2-Rail Diamond Rail™

Post: 5" x 5" square post  
 Post Length: 5' & 6'  
 Rail Size: 3"x3"  
 Rail Spacing: 11"  
 Color:   
 (Matching gate unavailable)

## 3-Rail Diamond Rail™

Post: 5" x 5" square post  
 Post Length: 5' & 6'  
 Rail Size: 3"x3"  
 Rail Spacing: 11"  
 Color:   
 (Matching gate unavailable)

## Single Gate

Sizes: Up to 8' wide  
 Hardware: Commercial grade stainless steel  
 powder-coated black  
 Color:

## Double Gate

Sizes: Up to 16' wide, 2 gates, latch in the center  
 Hardware: Commercial grade stainless steel powder-coated black; includes 2 drop rods  
 Color:

**Gates are available in kit form to match Durables® Horse Fencing.**

Durables® horse fence is sold by the linear foot. Please visit [durables.com](http://durables.com) or call (888) 743-3673 for pricing.





## Bottom Rail Reinforcement

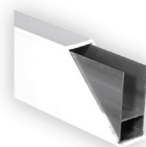
Providing superior strength and durability.

Most of our fence styles come with an metal insert in the bottom rail to ensure maximum strength and lasting durability.

### Bottom Rail Reinforcements



Metal  
"I" Channel



Metal  
"H" Channel



## Fence Gates

Blending optimal function and long-term performance.

You'll find matching gates for all of our fences that are designed with function and long-term performance in mind. We use the best gate hardware in the industry. Manufactured with rust-free, high-tech engineered polymer and stainless steel components, our gate locks, latches and hinges have a limited lifetime warranty.



Our gate post inserts add extra strength and stability to your gate to ensure years of uninterrupted gate operation.



# Vinyl Fence Posts

Strong, durable and maintenance-free.

Manufactured from the highest grade materials, our fence posts are the strongest, most durable, low maintenance fence posts you'll find anywhere.



## Blank Post

Post Width: 4" x 4" & 5" x 5"  
 Post Height: 72", 84", 96",  
 105", 120" & 140"  
 Color:



## End Post

Post Width: 4" x 4" & 5" x 5"  
 Post Height: 72", 84", 96",  
 105", 120" & 140"  
 Color:



## Line Post

Post Width: 4" x 4" & 5" x 5"  
 Post Height: 72", 84", 96",  
 105", 120" & 140"  
 Color:



## Corner Post

Post Width: 4" x 4" & 5" x 5"  
 Post Height: 72", 84", 96",  
 105", 120" & 140"  
 Color:



## 3-Way Post

Post Width: 4" x 4" & 5" x 5"  
 Post Height: 72", 84", 96",  
 105", 120" & 140"  
 Color:



## Gate End Post

Post Width: 4" x 4" & 5" x 5"  
 Post Height: 72", 84", 96",  
 105", 120" & 140"  
 Color:      
 (Metal insert included)



## Gate Blank Post

Post Width: 4" x 4" & 5" x 5"  
 Post Height: 72", 84", 96",  
 105", 120" & 140"  
 Color:      
 (Metal insert included)



## Fast 2K

Size: 14.4 oz & 26 oz  
 FAST 2K is a more convenient  
 alternative to concrete for  
 setting fence posts.

Note: Posts are custom routed to match each specific style of fence.  
 For example, posts for the Augusta fence will have 3 route holes.



# U-mounts

Custom installation made easy.

Available in: White, Tan or Khaki (unless noted) Replace the "X" in the product code with the selected color option:

- White= W
- Tan= T
- Khaki= K



**1.5" x 5.5" U-mount**  
AXBR-UMOUNT-1.5X5.5



**2" x 3.5" U-mount**  
AXBR-UMOUNT-2X3.5



**2" x 6" U-mount**  
AXBR-UMOUNT-2X6



**1.5" x 5.5" External U-mount**  
AXBR-UMOUNTEXT-1.5X5.5

Fasteners sold separately.

# Post Hole Covers

Providing a clean look to your finished project.



**1.5" x 5.5" Post Hole Cover**  
AXCP-CVR-1.5X5.5



**2" x 3.5" Post Hole Cover**  
AXCP-CVR-1.75X3.5



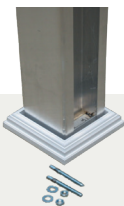
**Hinged Screw Cap**  
AXCP-SCREWCAP  
(fits a #10 pan head screw)



**Self Tapping Screw**  
AMFA-SCREWTAP-1.0SS

# Mounts

Simplify your post installation.



**5" x 5" x 54" Concrete Mount**  
AXPT-CMOUNT-5X54  
(includes mounting hardware and post skirt)



**4" x 4" x 36" Concrete Mount**  
AXPT-CMOUNT-4X36  
(includes mounting hardware and post skirt- can extend to 42")

# DURABLES<sup>®</sup> RAILING SYSTEMS: THE BEST CHOICE FOR STRENGTH AND DURABILITY.

AVAILABLE IN A RANGE OF ATTRACTIVE COLORS

EASY TO MAINTAIN

FULLY CUSTOMIZABLE

IMPACT- AND WEATHER-RESISTANT

CODE COMPLIANT

**FREE SHIPPING**

A MINIMUM ORDER APPLIES



# Classic Vinyl Railing

The best choice for strong & durable railing.



## The Waltham™

Color:

Rail: 2" x 3.5" top & bottom rail

Railing Height: 36" & 42" (bottom rail 2" from the ground)

Spindle Style: .875" x 1.5" Rectangular Spindle

Length: 4', 6' & 8' straight; 6' & 8' stair

### Metal Inserts:

Top Rail Insert – included

Bottom Rail Insert – optional

Stair Rail–Top Rail Insert – included

Bottom Rail Insert – optional

IRC<sup>1</sup>

Brackets Included

## The Brighton™

Color:

Rail: T-Rail top rail & 2" x 3.5" bottom rail

Railing Height: 36" & 42" (bottom rail 2" from the ground)

Spindle Style: .875" x 1.5" Rectangular Spindle

Length: 4', 6' & 8' straight; 6' & 8' stair

### Metal Inserts:

Top Rail Insert – included

Bottom Rail Insert – optional

Stair Rail–Top Rail Insert – included

Bottom Rail Insert – optional

IRC<sup>1</sup>

Brackets Included



## The Hudson

Color:

Rail: T-Rail top rail & 2" x 3.5" bottom rail

Railing Height: 36" & 42" (bottom rail 2" from the ground)

Spindle Style: .75" Black Round Aluminum

Length: 4', 6' & 8'

Stair Rail Length: 6' & 8'

### Metal Inserts:

Top Rail Insert – included

Bottom Rail Insert – included

Stair Rail–Top Rail Insert – included

Bottom Rail Insert – included

IRC<sup>1</sup>

Brackets Included

*\*The brackets included with the classic stair railing are designed for angles of 28° to 42°.*

Color Options: White:  Tan:  Khaki:

*<sup>1</sup>Railing height noted is the installed height.*

# Premium Vinyl Railing

Attractive designs manufactured from the highest quality vinyl, up to 50% stronger than other brands.



## The Manchester™ Railing

Color:

Rail: 2" x 3.5" top & bottom rail

Railing Height: 36" & 42" (bottom rail 2" from the ground)

Spindle Style: 1.5" Square Spindle

Length: 4', 6' & 8' straight; 6' & 8' stair

Aluminum Inserts:

Top Rail Insert–included

Bottom Rail Insert–optional

Stair Rail–top & bottom rail inserts are included

IRC<sup>1</sup> & IBC<sup>1</sup>

Brackets Included

## The Harrington™ Railing

Color:

Rail: T-Rail top rail & 2" x 3.5" bottom rail

Railing Height: 36" & 42" (bottom rail 2" from the ground)

Spindle Style: 1.5" Square Spindle

Length: 4', 6', 8' & 10' straight; 6' & 8' stair

Aluminum Inserts:

Top Rail Insert–included

Bottom Rail Insert–optional

Stair Rail–top & bottom rail inserts are included

IRC<sup>1</sup> & IBC<sup>1</sup>

Brackets Included



## The Westport™ Railing

Color:

Rail: 2" x 3.5" top & bottom rail

Railing Height: 36" & 42" (bottom rail 2" from the ground)

Spindle Style: 1.5" Colonial Spindle

Length: 4', 6' & 8' straight; 6' & 8' stair

Aluminum Inserts:

Top Rail Insert–included

Bottom Rail Insert–optional

Stair Rail–top & bottom rail inserts are included

IRC<sup>1</sup> & IBC<sup>1</sup>

Brackets Included

## The Ashington™ Railing

Color:

Rail: T-Rail top rail & 2" x 3.5" bottom rail

Railing Height: 36" & 42" (bottom rail 2" from the ground)

Spindle Style: 1.5" Colonial Spindle

Length: 4', 6', 8' & 10' straight; 6' & 8' stair

Aluminum Inserts:

Top Rail Insert–included

Bottom Rail Insert–optional

Stair Rail–top & bottom rail inserts are included

IRC<sup>1</sup> & IBC<sup>1</sup>

Brackets Included





## The Bradford™ Railing

Color:

Rail: T-Rail top rail & 2" x 3.5" bottom rail

Railing Height: 36" & 42" (bottom rail 2" from the ground)

Spindle Style: .75" Black Square Aluminum Spindle

Length: 4', 6', 8' & 10' straight; 6' & 8' stair

Aluminum Inserts:

Top Rail Insert–included

Bottom Rail Insert–included

Stair Rail–top & bottom rail inserts are included

IRC<sup>1</sup> & IBC<sup>1</sup>

Brackets Included



## The Kirklees™ Railing

Color:

Rail: T-Rail top rail & 2" x 3.5" bottom rail

Railing Height: 36" & 42" (bottom rail 2" from the ground)

Spindle Style: .75" Black Round Aluminum Spindle

Length: 4', 6', 8' & 10' straight; 6' & 8' stair

Aluminum Inserts:

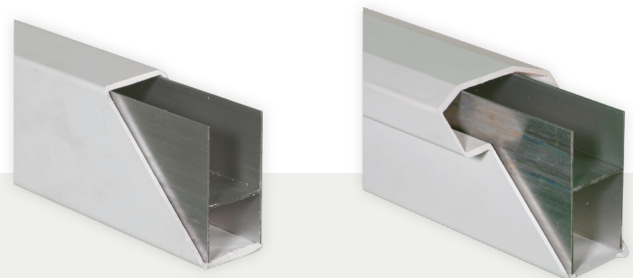
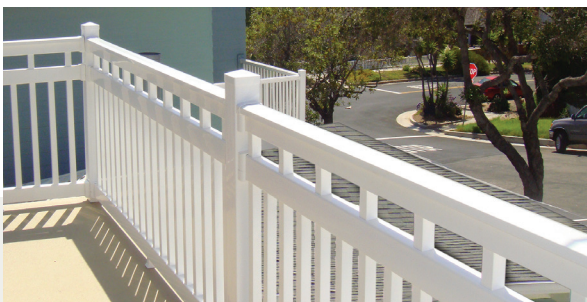
Top Rail Insert–included

Bottom Rail Insert–included

Stair Rail–top & bottom rail inserts are included

IRC<sup>1</sup> & IBC<sup>1</sup>

Brackets Included



## The Dorset™ Railing

Color:

Rail: T-Rail top rail & 2" x 3.5" bottom and mid rail

Railing Height: 42" (bottom rail 2" from the ground)

Spindle Style: 1.5" Square Spindle

Length: 4', 6', 8' & 10' straight

Aluminum Inserts:

Top Rail Insert–included

Bottom Rail Insert–optional

Stair Rail–N/A

IRC<sup>1</sup> & IBC<sup>1</sup>

Brackets Included

## Aluminum Insert (2" x 3.5" & T-Rail)

The aluminum inserts needed to meet testing requirements are included with each railing kit. Additional aluminum inserts are available for custom installations.

- Size: 2" x 3.5" x 48"
- Size: 2" x 3.5" X 72"
- Size: 2" x 3.5" X 96"
- Size: 2" x 3.5" X 120"

\*The brackets included with the premium stair railing are designed for angles of 30° to 40°.

# Deck Board Railing

Our premium grade vinyl railing with a decorative top rail accent.



## The Bexley™ Deck Board Railing

Deck board not included- match to your specific deck

Color:

Rail: 2" x 3.5" top & bottom rail

Railing Height: 36" & 42" (bottom rail 2" from the ground)

Spindle Style: 1.5" Square Spindle

Length: 4', 6' & 8' straight; 6' & 8' stair

Aluminum Inserts:

Top Rail Insert-included

Bottom Rail Insert-optional

Stair Rail-top & bottom rail inserts are included

IRC<sup>1</sup> & IBC<sup>1</sup>

Brackets Included

## The Hastings™ Deck Board Railing

Deck board not included- match to your specific deck

Color:

Rail: 2" x 3.5" top & bottom rail

Railing Height: 36" & 42" (bottom rail 2" from the ground)

Spindle Style: 1.5" Colonial Spindle

Length: 4', 6' & 8' straight; 6' & 8' stair

Aluminum Inserts:

Top Rail Insert-included

Bottom Rail Insert-optional

Stair Rail-top & bottom rail inserts are included

IRC<sup>1</sup> & IBC<sup>1</sup>

Brackets Included



## The Halton™ Deck Board Railing

Deck board not included- match to your specific deck

Color:

Rail: 2" x 3.5" top & bottom rail

Railing Height: 36" & 42" (bottom rail 2" from the ground)

Spindle Style: .75" Square Aluminum Spindle

Length: 4', 6' & 8' straight; 6' & 8' stair

Aluminum Inserts:

Top Rail Insert-included

Bottom Rail Insert-included

Stair Rail-top & bottom rail insert - included

IRC<sup>1</sup> & IBC<sup>1</sup>

Brackets Included

## The Warrington™ Deck Board Railing

Deck board not included- match to your specific deck

Color:

Rail: 2" x 3.5" top & bottom rail

Railing Height: 36" & 42" (bottom rail 2" from the ground)

Spindle Style: .75" Round Aluminum Spindle

Length: 4', 6' & 8' straight; 6' & 8' stair

Aluminum Inserts:

Top Rail Insert-included

Bottom Rail Insert-included

Stair Rail-top & bottom rail inserts are included

IRC<sup>1</sup> & IBC<sup>1</sup>

Brackets Included



# Vinyl Railing Gates

Blending optimal function and long-term performance, with top-of-the-line hardware.



## .875" x 1.5" Rectangular Spindle

Style: Waltham & Brighton

Color:

Rail: 2" x 3.5" or T-Rail top rail

Height: 36" & 42" (bottom rail 2" from the ground)



## 1.5" Square Spindle

Style: Manchester, Harrington & Bexley

Color:

Rail: 2" x 3.5" or T-Rail top rail

Height: 36" & 42" (bottom rail 2" from the ground)



## 1.5" Colonial Spindle

Style: Westport, Ashington & Hastings

Color:

Rail: 2" x 3.5" or T-Rail top rail

Height: 36" & 42" (bottom rail 2" from the ground)



## 1.5" Square Spindle

Style: Dorset

Color:

Rail: T-Rail top rail

Height: 42" (bottom rail 2" from the ground)



## .75" Square Aluminum Spindle

Style: Bradford & Halton

Color:

Rail: T-Rail top rail

Height: 36" & 42" (bottom rail 2" from the ground)



## .75" Round Aluminum Spindle

Style: Kirklees, Warrington & Hudson

Color:

Rail: T-Rail top rail

Height: 36" & 42" (bottom rail 2" from the ground)

Gate kits include commercial grade polyvinyl hardware:



Key-lockable latch



Self-closing hinges

\*Gates are 60" wide but may be cut down to a custom size on site.

# Wraps

For use around new or existing wood posts.

Available in: White, Tan or Khaki (unless noted) Replace the "X" in the product code with the selected color option:

- White= W
- Tan= T
- Khaki= K



## Smooth Vinyl Post Wrap

Size: 4" x 4" x 96"– AXPT-WRAP-4X96

Size: 4" x 4" x 120"– AXPT-WRAP-4X120

Size: 6" x 6" x 96"– AXPT-WRAP-6X96

Size: 6" x 6" x 120"– AXPT-WRAP-6X120

\*Installed size is 0.25" larger than post wrap size

\*For use with Adjustable Post Skirt only

## Fluted Vinyl Post Wrap (White only)

Size: 4" x 4" x 102"– AWPT-WRAPFLUTELBP-4X102

Size: 4" x 4" x 120"– AWPT-WRAPFLUTELBP-4X120

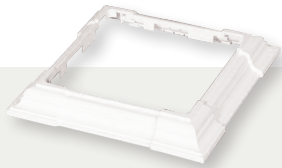
Size: 6" x 6" x 102"– AWPT-WRAPFLUTELBP-6X102

Size: 6" x 6" x 120"– AWPT-WRAPFLUTELBP-6X120

Size: 8" x 8" x 102"– AWPT-WRAPFLUTELBP-8X102

# Wrap Skirts

Decorative trim at the base of each post provides a finished look.



## 4-Piece Adjustable Post Skirt

Size: ADJUSTABLE–AXPT-WRAPTRIM4PC-ADJ

\*Fits a 3", 3.5", 4", 5", 6" & 6.5" post



# Vinyl Sleeves

Attractive covers that fit over our post mounts.

Available in: White, Tan or Khaki (unless noted) Replace the "X" in the product code with the selected color option:

- White= W
- Tan= T
- Khaki= K



## Vinyl Blank Post Sleeve Kit

(Includes external post cap and post skirt)

- Size: 4" x 4" x 39"-WXR-POSTKIT-4X39
- Size: 4" x 4" x 45"-WXR-POSTKIT-4X45
- Size: 4" x 4" x 54"-WXR-POSTKIT-4X54



## Vinyl Blank

- Size: 4" x 4" x 39"-LXPT-BLANK-4X39
- Size: 4" x 4" x 45"-LXPT-BLANK-4X45
- Size: 4" x 4" x 72"-LXPT-BLANK-4X72
- Size: 4" x 4" x 84"-LXPT-BLANK-4X84
- \*More sizes available, and will fit over 4"x4" treated wood



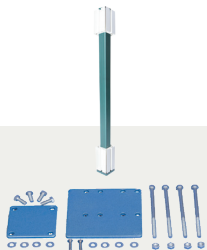
## Vinyl Newel: Colonial

(White only)

- Size: 4" x 4" x 48"-LWPT-NEWELCOL-4X48

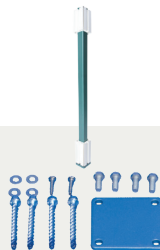
# Mounts

Simplify your post installation.



## Railing Post Mount with Wood Fasteners

- AMPT-HDMOUNTWD-4X36
- AMPT-HDMOUNTWD-4X42



## Railing Post Mount with Concrete Fasteners

- AMPT-HDMOUNTCC-4X36
- AMPT-HDMOUNTCC-4X42

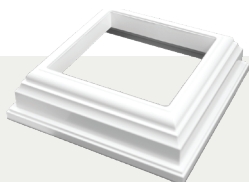


## General Mount

NOT FOR COMMERCIAL APPLICATION  
(mounting hardware sold separately)  
AMPT-GENMOUNT-4

# Sleeve Skirts

Decorative trim at the base of each post provides a finished look.



## Post Skirt

- Size: 4" x 4"-AXPT-SKIRT-4
- Size: 5" x 5"-AXPT-SKIRT-5
- Size: 6" x 6"-AXPT-SKIRT-6

\*More sizes available



## 2-Piece Federation Post Skirt

- Size: 4" x 4"-AXPT-SKIRT2PC-4
- Size: 5" x 5"-AXPT-SKIRT2PC-5
- Size: 6" x 6"-AXPT-SKIRT2PC-6

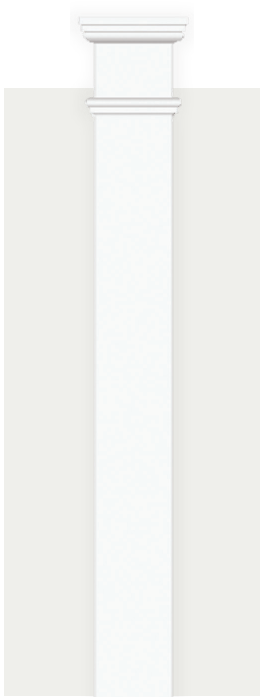
\*More sizes available

# Vinyl Columns

Supported by extruded aluminum for lightweight durability and superior strength.

Available in: White, Tan or Khaki (unless noted) Replace the "X" in the product code with the selected color option:

- White= W
- Tan= T
- Khaki= K



## Square Column

(White only)

Size: 8" x 8" x 96"  
LWPT-SQCOLKIT-8X96

Size: 8" x 8" x 120"  
LWPT-SQCOLKIT-8X120  
(tested load of 11,000 lb.)



## Round Straight Column

(White only)

Size: 8" x 8" x 108"  
LWPT-RNDSTCOLKIT-108

(tested load of 18,000 lb.)



## Round Tapered Column

(White only)

Size: 8" x 8" x 108"  
LWPT-RNDTPCOLKIT-108

Size: 8" x 8" x 120"  
LWPT-RNDTPCOLKIT-120  
(tested load of 18,000 lb.)



## Colonial Structural

Size: 4" x 4" x 108"  
LXPT-PPCOL-4X108

Size: 5" x 5" x 108"  
LXPT-PPCOL-5X108  
(tested load of 11,000 lb.)



## Square Structural

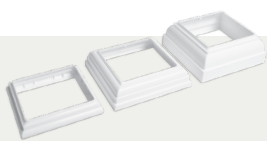
Size: 4" x 4" x 108"  
LXPT-PPSQ-4X108

Size: 5" x 5" x 108"  
LXPT-PPSQ-5X108

Size: 6" x 6" x 108"  
LXPT-PPSQ-6X108  
(tested load of 11,000 lb.)

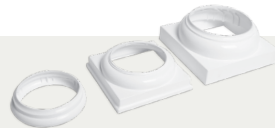
(Top & bottom skirts/trim kits are not included, but can be purchased separately)

## Trim Kits



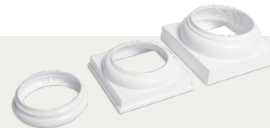
## Square Column

AWPT-BASE&COLLAR-8X8



## Round Straight Column

AWPT-BASE&COLLAR-RNDST



## Round Tapered Column

AWPT-BASE&COLLAR-RNDTP

Use skirts on page 22 with the Colonial Structural and Square Structural columns.



# Secondary (ADA) Railing

All the parts you need for ADA-compliant installations.

Available in: White, Tan, Khaki & Black (unless noted) Replace the "X" in the model number with the selected color option:

- White= W
- Tan= T
- Khaki= K
- Black= B



**104" Rail with Stiffener**  
NXRA-ADARAIL-1.5X104



**Hand Rail Bracket Kit**  
NXRA-ADARAILBRK-1.5



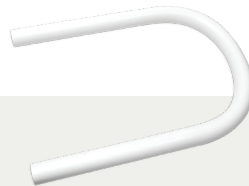
**Straight Wall Return Kit**  
NXRA-ADASTRTN-1.5



**Bracket Wall Return Cover Plate (4/bag)**  
NXRA-ADACVRPLT-1.5



**Post Return**  
NXRA-ADAPTRTN-16.5X6



**End Loop**  
NXRA-ADALOOP-18X12



**90° Wall Return Kit w/Joiner**  
NXRA-ADAWALLJOIN-1.5



**90° Exterior Corner**  
NXRA-ADACORNER-1.5



**90° Exterior Corner w/Joiner**  
NXRA-ADACORNJOIN-1.5



**90° Interior Corner**  
NXRA-ADACORNERINS-1.5



**Straight Joiner (4/bag)**  
NMRA-ADASTJOIN-6



**Adjustable Joiner (4/bag)**  
NMRA-ADAJOINADJ-1.5



**Joint Ring (4/bag)**  
NXRA-ADAJTRING-1.5



**Rail End Cap (4/bag)**  
NXCP-ADARAILEND-1.5



**External Adjustable Joiner with Male Ends and Joint Rings**  
NXRA-ADAEXADJOIN-1.5

All parts shown are available in both residential & commercial grade. Residential grade shown.

# Classic Brackets

Secure, sturdy brackets for Waltham, Brighton and Yorkshire railing.

Available in: White, Tan or Khaki (unless noted) Replace the "X" in the product code with the selected color option:

- White= W
- Tan= T
- Khaki= K



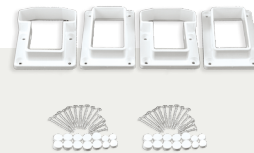
## 2" x 3.5" 1-Piece Straight Kit

AXBR-CVSTRGHTKIT-2X3.5



## 2" x 3.5" 1-Piece Stair Kit

AXBR-CVSTAIRKIT-2X3.5



## T-Rail & 2" x 3.5" 1-Piece Straight Kit

AXBR-CVSTRGHTKIT-TRAIL



## T-Rail & 2" x 3.5" 1-Piece Stair Kit

AXBR-CVSTAIRKIT-TRAIL

*\*Classic stair rail brackets are designed for angles of 28° to 42°.*

This row of adapters fit only the brackets above.



## 8" Column Classic Bracket Adapter

AXBR-CVCOLADAPTER-8



## 8" Column Classic Stair Bracket Adapter

AXBR-CVCOLSTAIRADP-8

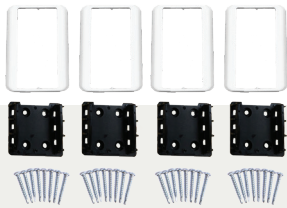


# Premium Brackets

Dependable accessories for our premium line of railing.

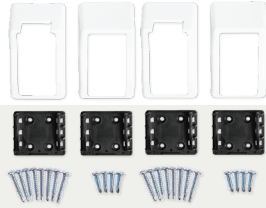
Available in: White, Tan or Khaki (unless noted) Replace the "X" in the product code with the selected color option:

-  White= W
-  Tan= T
-  Khaki= K



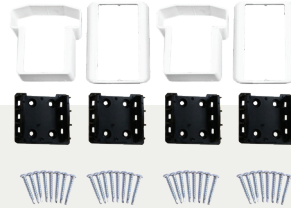
## 2" x 3.5" 2-Piece Straight Kit

AXBR-2PCSTRGHTKIT-2X3.5



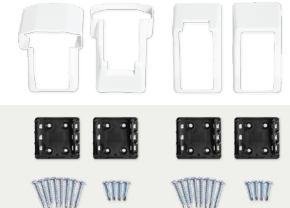
## 2" x 3.5" 2-Piece Stair Kit

AXBR-STAIRKIT-2X3.5



## T-Rail & 2" x 3.5" 2-Piece Straight Kit

AXBR-STRGHTKIT-TRAIL



## T-Rail & 2" x 3.5" 2-Piece Stair Kit

AXBR-2PCSTRGHTKIT-TRAIL

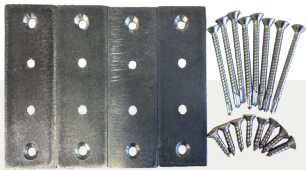
\*Premium stair rail brackets are designed for angles of 30° to 40°.



This adapters only fits the brackets above.

## 8" Column Premium Straight + Stair Bracket Adapter

AXBR-COLSTAIRADP-8



## Deck Board Clips

AMBR-DECKCLIP-KIT



## Deck Board Stair Bracket Set

AXBR-STAIRSETDB-2X3.5

# Classic and Premium Brackets

Universal accessories offer ultimate versatility.

Available in: White, Tan or Khaki  
(unless noted) Replace the "X" in the product code with the selected color option:

- White= W
- Tan= T
- Khaki= K



## 2" x 3.5" Adjustable Straight Kit

AXBR-WIZANGLE-2X3.5



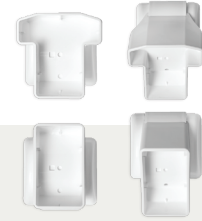
## T-Rail & 2" x 3.5" Adjustable Straight Kit

AXBR-WIZANGLE-TRAIL



## 2" x 3.5" Adjustable Stair Kit

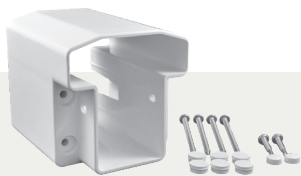
AXBR-WIZSTAIR-2X3.5



## T-Rail & 2" x 3.5" Adjustable Stair Kit

AXBR-WIZSTAIR-TRAIL

*\*Brackets above are designed for angles of 15° to 45°.*



## T-Rail Field Cut Bracket

AXBR-FIELD-TRAIL



## 2" x 3.5" Field Cut Bracket

AXBR-FIELD-2X3.5



## 45° Classic Bracket T-Rail Adapter

AXBR-CV45ADAPTER-TRAIL



## 45° Classic Bracket 2" x 3.5" Adapter

AXBR-CV45ADAPTER-2X3.5

*\*Brackets above accommodate a vertical or horizontal custom angle.*

# Foot Blocks

For added strength when splitting a rail section.



## Premium Foot Block

AXRA-FOOTBLOCK-1.5



## Classic Foot Block

AXRA-CVFOOTBLOCK-1.5X1.5X8





# DURABLES<sup>®</sup> ALUMINUM FENCING & RAILING:

LOW MAINTENANCE  
PREMIUM QUALITY & DURABILITY  
IMPACT- AND WEATHER-RESISTANT  
LIMITED LIFETIME WARRANTY

**FREE SHIPPING**

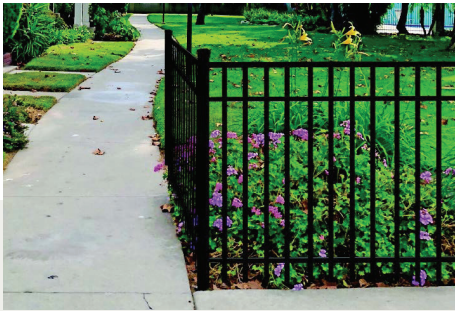
A MINIMUM ORDER APPLIES



# Aluminum Fencing

A classy yet low-maintenance, economical fencing option.

Manufactured from the best aluminum in the industry, our aluminum fencing offers strength and security plus it looks great! Proven not to rust or corrode, aluminum fencing is the perfect addition to your yard.



## The Parma Aluminum Fencing

Height: 4' & 5'  
Width: 6'  
Gate Width: Single 4', 5' Double 8' & 10'  
Picket Style: Flat top  
Color: ■



## The Canton Aluminum Fencing

Height: 4' & 5'  
Width: 6'  
Gate Width: Single 4', 5' Double 8' & 10'  
Picket Style: Alternating spear flat top  
Color: ■



## The Beagle Aluminum Fence

Height: 4'  
Width: 6'  
Gate Width: Single: 4' Double: 8'  
Picket Style: Flat top  
Color: ■

## The Hamilton Aluminum Fencing

Height: 4.5'  
Width: 6'  
Gate Width: Single 4', 5' Double 8' & 10'  
Picket Style: Flat top & flush bottom  
Color: ■

## The Canfield Aluminum Fencing

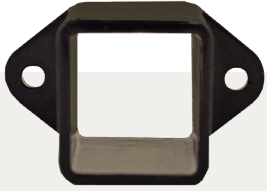
Height: 4'  
Width: 6'  
Gate Width: Single 4', 5' Double 8' & 10'  
Picket Style: Flat top & flush bottom  
Color: ■



# Aluminum Fencing Accessories

Expand your options with our matching fittings.

Black in stock. Additional colors available by special order.



**Residential Straight Rail End Bracket for Canfield**

1" side wall  
(Includes 3 #8-1" screws)



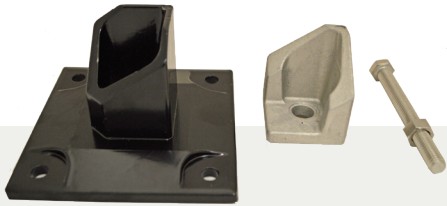
**Commercial Straight Rail End Bracket for Canfield F**

1.5" side wall  
(Includes 3 #8-1" screws)



**Swivel Rail Bracket**

(Includes 3 #8-1" screws)



**Floor Flange**

(fasteners not included)

**Touch Up Paint**

**Screws**

#10-1" screws



**End Post**



**Line Post**



**Corner Post**



**Gate End Post**

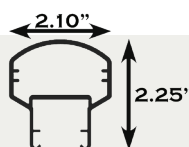
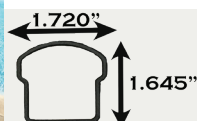
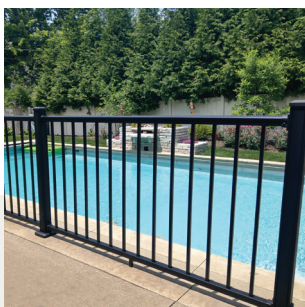


**Gate Blank Post**

# Aluminum Railing

An economical alternative to traditional wrought iron.

Offering a sleek, clean look, our premium quality aluminum railing is manufactured from the best aluminum in the industry. No matter what Mother Nature decides to throw at it, it will not cause excessive corrosion or rust.



## The Sterling Aluminum Railing

Color: Textured Black, Textured White

Rail: Bread-loaf molded top rail & 1.25" x 1.375" bottom rail

Railing Height: 36" & 42" (bottom rail 2" from the ground)

Spindle Style: .60" Square Spindles

Length: 6' & 8' straight; 6' & 8' stair

IRC<sup>2</sup> & IBC<sup>2</sup>

Brackets Included

(Stair brackets are designed for angles of 32° to 36°)

## The Dalton Aluminum Railing

Color: Textured Black

Rail: Bread-loaf molded top rail & 1.5" x 1.25" bottom rail

Railing Height: 36" & 42" (bottom rail 2" from the ground)

Gate Width: 60"

Spindle Style: .75" Square Spindles

Length: 6', 8' & 10' straight; 6' & 8' stair

IRC<sup>3</sup> & IBC<sup>3</sup>

Brackets Included

*\*Railing height noted is the installed height.*

**“THE QUALITY OF THE PRODUCTS IS EXCELLENT AND IT WAS VERY EASY TO INSTALL. OUR STANFORD RAILING LOOKS GREAT AND IS VERY STURDY. YOUR CUSTOMER SERVICE PEOPLE WERE PROFESSIONAL AND VERY FRIENDLY. I APPRECIATED THE GREAT SERVICE AND QUICK SHIPPING.”**

**- RANDY S.  
COLUMBUS, OH**



# Aluminum Railing Accessories

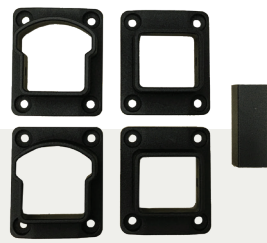
Expand your options with our matching fittings.



## Sterling Aluminum Railing Post Kit

Includes post cap, 1-piece post skirt and base flange (fasteners not included).

Size: 2.5" x 2.5" x 39"  
 2.5" x 2.5" x 45"  
 2.5" x 2.5" x 54"



## Sterling Aluminum Railing Straight Brackets

(includes fasteners and foot block)



## Sterling Aluminum Railing Stair Brackets

(includes fasteners)



## Sterling Aluminum Railing Adjustable Brackets

(adjust vertically & horizontally and includes fasteners)



## Dalton Aluminum Railing Post Kit

Includes post cap, 2-piece post skirt and base flange (fasteners not included).

Size: 3" x 3" x 39"  
 3" x 3" x 45"  
 3" x 3" x 54"



## Dalton Aluminum Railing Straight Brackets

(includes fasteners and foot block)



## Dalton Aluminum Railing Universal Brackets

(includes fasteners)

# Secondary (ADA) Aluminum Railing



## Wall Return Aluminum Railing

Rail: 1.5" diameter  
 Length: 4', 6' or 8'  
 Attachment: (2) 90-degree wall returns, 8' includes additional middle mount  
 Hardware: Wall mounts with wood fasteners  
 Color:



## Straight Aluminum Railing

Rail: 1.5" diameter  
 Length: 4', 6' or 8'  
 Attachment: (2) wall mounts, 8' includes additional middle mount  
 Hardware: Wall mounts with wood fasteners  
 Color:

A photograph of a wooden deck with white railings and a swimming pool in the background. The image is dimmed to serve as a background for the text.

# LIGHT UP YOUR OUTDOOR SPACE WITH LED LIGHTING FROM DURABLES®

EASY TO INSTALL

DURABLE & BEAUTIFUL

SOLAR AND PLUG & PLAY OPTIONS

# Solar Post Caps

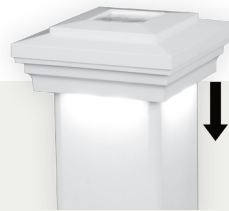
Enhance your look with architectural details and lighting.



**Cape May Solar LED**

Size: 4", 5" & 6"

Color:



**Cape May Downward Solar LED**

Size: 4" & 5"

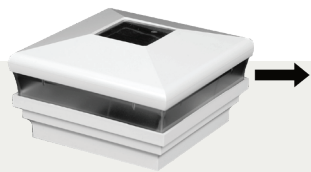
Color:



**Classic Solar LED**

Size: 3.5", 4" & 5"

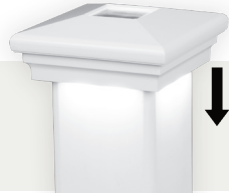
Color:



**Neptune Solar LED**

Size: 4", 5" & 6"

Color:



**Neptune Downward Solar LED**

Size: 4" & 5"

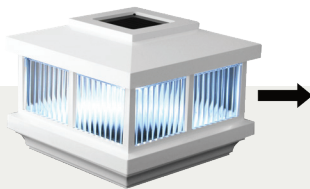
Color:



**Galaxy Solar LED**

Size: 3.5", 4" & 5"

Color:



**Cambridge Solar LED**

Size: 4", 5" & 6"

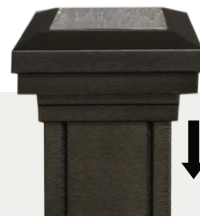
Color:



**Ornamental Lens Solar LED**

Size: 2.5" & 3"

Color: Textured Black & Textured White



**Ornamental Downward Solar LED**

Size: 2.5" & 3"

Color: Textured Black & Textured White



# LED Low Voltage Post Caps

Enhance your look with architectural details and lighting.

(All low-voltage LED post caps work with power supplies and wiring harnesses on page 38)



**Cape May Low Voltage LED**

Size: 4" & 5"

Color:



Starter packs include 6 caps, wiring & a low voltage adapter.



**Cape May Downward Low Voltage LED**

Size: 4" & 5"

Color:



**Haven Low Voltage LED**

Size: 4" & 5"

Color:



**Cape May Low Voltage LED Starter Pack**



Expansion packs include 1 cap & wiring

**Cape May Downward Low Voltage LED Starter Pack**



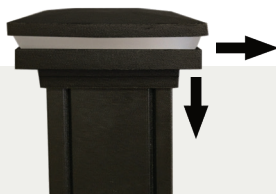
**Haven Low Voltage LED Starter Pack**



**Cape May Low Voltage LED Expansion Pack**

**Cape May Downward Low Voltage LED Expansion Pack**

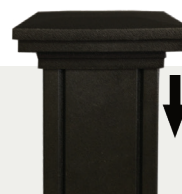
**Haven Low Voltage LED Expansion Pack**



**Ornamental Combination Low Voltage LED**

Size: 2.5" & 3"

Color:



**Ornamental Downward Low Voltage LED**

Size: 2.5" & 3"

Color:



**Ornamental Lens Low Voltage LED**

Size: 2.5" & 3"

Color:



**Haven Downward Low Voltage LED**

Size: 4" & 5"  
Color:



**Neptune Low Voltage LED**

Size: 4" & 5"  
Color:



**Neptune Downward Low Voltage LED**

Size: 4" & 5"  
Color:

Starter packs include 6 caps, wiring & a low voltage adapter.



**Haven Downward Low Voltage LED Starter Pack**



**Haven Downward Low Voltage LED Expansion Pack**

**Neptune Low Voltage LED Starter Pack**



**Neptune Low Voltage LED Expansion Pack**

**Neptune Downward Low Voltage LED Starter Pack**



**Neptune Downward Low Voltage LED Expansion Pack**

Expansion packs include 1 cap & wiring

# Lighting Accessories

Add ambiance to your outdoor space with easy to install lighting.



**LED Under Rail Light Strip**

Size: 68" & 92"   
Color: 




**3" LED Under Rail Light**

Size: 3" with 10" lead wire  
Color: 



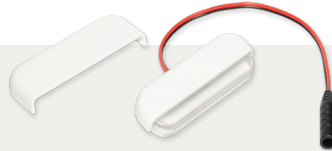
**LED Dome Side Light**

Size: 2.75" x 1.344"  
9" lead wire  
Color: 




**LED Flush Deck Light - Frosted Acrylic**

Size: .955" (diameter)  
x .685" (depth) 9" lead wire




**LED Stair/Side Light with Covers**

Size: 1.130" x 3.223"  
Color: 



**Ornamental Low Voltage Side Light**

Size: 1.5"  
Color: 

# Power Supply and Wiring Harnesses

(Works with the low voltage LED lights above and with the low voltage LED post caps on page 36 & 37)



**50 Watt Power Supply with Photo Eye, Timer and Remote**



**12 Watt Power Supply with Photo Eye**



**12 Watt Dimmer Switch**  
(includes remote control)



**2' Harness Connector**



**5' Harness Connector**



**7' Harness Connector**



**9' Harness Connector**



**5 Output Splitter**



**2 Output Splitter**



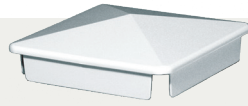
# Traditional Post Caps

Enhance your look with architectural detail and style.



## External

Size: 3", 3.5", 4", 5", 6" & 6.5"  
(6.5" only available in white)  
Color:



## Internal

Size: 4" & 5"  
Color:



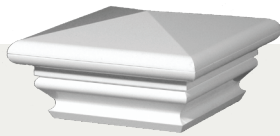
## Gothic

Size: 3.5", 4" & 5"  
Color:



## Ball

Size: 4" & 5"  
Color:



## Federation

Size: 4", 5" & 6"  
Color:



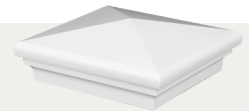
## Cape May

Size: 4", 5" & 6"  
Color:



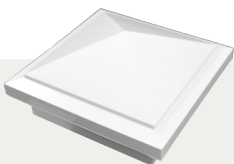
## New England

Size: 4", 5", 6" & 6.5"  
(6.5" only available in white)  
Color:



## Neptune

Size: 4", 5" & 6"  
Color:



## Haven

Size: 4", 5" & 6"  
Color:



## Coachman

Size: 5"  
Color:



## Horse Head

Size: 5"  
Color:



## Ornamental

Size: 2.5", 3", 4" (4" - Black only)  
Color:



- \*1 - Straight Railing is tested in accordance with ICC-ES Standards - Report ESR-4954
- \*2 - Straight Railing is tested in accordance with ASTM D70032 Standards - PEI Report 6414
- \*3 - Straight Railing is tested in accordance with ICC-ES Standards - Intertek Report 200115007SHF & 200115007SHF

# **durables**<sup>®</sup>

WSR-DURFULL-2022

Purchaser has the sole responsibility to determine whether Durables<sup>®</sup> products comply with applicable codes and are appropriate for the intended use. The purchaser and installer should review the intended use of the products with a licensed professional engineer to determine code compliance and the intended use.



Durables<sup>®</sup> is a federally registered trademark of USA Vinyl, LLC. ©2022 USA Vinyl, LLC.