



VINYL FENCING & RAILING


ALUMINUM FENCING & RAILING

LED LIGHTING

durables[®]

WORTH THE WEIGHT!

A letter from the president:

When I first started in the vinyl fencing industry over 25 years ago, it was nearly impossible to tell one vinyl fence from the next. However, like everything else over the years, others have gone to great lengths to make their products cheaper, primarily by using less vinyl. In turn, making the material thinner. At Durables, we still manufacture the same high quality, made in the USA, heavy duty vinyl fencing and railing that we did 25 years ago. In fact, our products can be up to 50% heavier/thicker than the competition. When comparing the quality and durability of vinyl fencing, it's important to consider panel weight. Thicker material means a heavier, stronger product. Simply look for the  symbol throughout this brochure to compare the weight of any other panel on the market to one of our panels and you'll immediately see the Durables difference.

At Durables®, the only thing stronger than our products is the service that comes with them.™. We believe that Great Experiences Matter, we want every step from the first call to the completion of your projects to be a great experience. We made a decision a long time ago to stand by our values and only offer strong, durable products that are guaranteed to last. We back that guarantee up with our limited lifetime warranty and product support.

Sincerely,



Brad Halley
President

THICKER VINYL =  HEAVIER WEIGHT = SUPERIOR DURABILITY

Vinyl available in White, Tan, Khaki, Gray, Costal* or Cedar *



Aluminum Fencing available in Black



Aluminum Railing available in Textured White or Textured Black



* Indicates our Woodgrain fencing

Fencing and railing that's built to last

- All vinyl fencing and railing made in the USA
- Unique customization available
- High impact resistant
- Low maintenance
- Thick, heavy-duty vinyl
- Won't chip, rot or crack
- Lifetime implementation support
- Limited Lifetime Warranty

**WE STAND BEHIND
EVERYTHING WE
MAKE, AND WE'LL
BE HERE FOR YOU
BEFORE, DURING
AND AFTER YOUR
PURCHASE.**



WE TAKE PRIDE IN MANUFACTURING PREMIUM QUALITY FENCING AND RAILING THAT ARE ENVIRONMENTALLY FRIENDLY



Manufactured from PVC, 100% BPA free



Made from 85% recycled material



Extruded with a closed loop water system

By using recycled materials, we have kept more than 50 million pounds of plastic out of landfills. Enough to put a Durables picket fence from Portland, Maine to Los Angeles, California.



Durables Woodgrain

Introducing the latest addition to Durables: Woodgrain vinyl fencing and railing. Combining the look of wood with the durability and strength of vinyl, this product is now available in two stunning options – Coastal and Cedar. Elevate any outdoor space with this classic touch. Crafted with the same quality Durables vinyl, this fencing solution ensures both style and resilience. Easy to maintain, you'll never need to paint, stain or seal; just spray with water to clean.

Coastal



Available Styles:

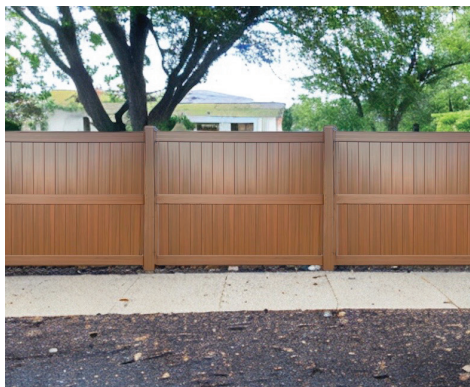
Ashforth, Townsend, 2-Rail, 3-Rail & 4-Rail Horse Fence, Amherst Railing

Cedar



Available Styles:

Newport, Townsend, Canterbury, 2-Rail, 3-Rail & 4-Rail Horse Fence, Amherst Railing



Privacy Fencing



The perfect backdrop to lush garden plants or lively backyard parties, our privacy fencing offers both seclusion and sophistication. Providing maximum privacy and requiring minimal maintenance, we offer a wide variety of styles from traditional to contemporary to complement virtually any architectural style. To ensure superior strength and durability, the bottom rail is reinforced with aluminum.

All of our privacy fences 6 feet tall and below can be installed to withstand wind gusts of up to 130 mph.

Premium

Our Durables Premium style privacy fences feature a 6" picket with .060 tongue and groove



The Ashforth®

Height: 4', 5' & 6'
Width: 6' & 8'
Picket Style: 7/8" x 6"
Tongue & Groove .060"
Color:



The Canterbury™

Height: 5', 6', 7' & 8'
Width: 6' & 8'
Picket Style: 7/8" x 6"
Tongue & Groove .060"
Color:



The Townsend™

Height: 5', 6', 7' & 8'
Width: 6' & 8'
Picket Style: 7/8" x 6"
Tongue & Groove .060"
(accents 3/4" round black aluminum)
Color:



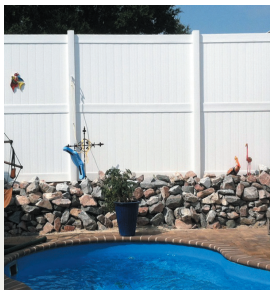
The Briston™

Height: 5', 6', 7' & 8'
Width: 6' & 8'
Picket Style: 7/8" x 6"
Tongue & Groove .060"
(accents 1.25" x 1.25")
Color:



The Portsmouth™

Height: 5', 6', 7' & 8'
Width: 6' & 8'
Picket Style: 7/8" x 6"
Tongue & Groove .060"
(accents 7/8" x 1.5")
Color:



The Newport™

Height: 6', 7' & 8'
Width: 6' & 8'
Picket Style: 7/8" x 6"
Tongue & Groove .060"
Color:



The Turnbridge®

Height: 5', 6', 7' & 8'
Width: 6' & 8'
Picket Style: 7/8" x 6"
Tongue & Groove .060"
(accents 7/8" x 1.5")
Color:



¹ Average weight noted is for a 6'x8' panel.

Classic

Our Durables Classic style privacy fences feature a wide-board 11.3" picket with .055" tongue and groove.



The Wendell™

Height: 4', 5', 6', 7', 8'
 Width: 6' & 8'
 Picket Style: 7/8" x 11.3"
 Tongue & Groove .055"
 Color:



The Winchester™

Height: 5', 6', 7', 8'
 Width: 6' & 8'
 Picket Style: 7/8" x 11.3"
 Tongue & Groove .055"
 Color:



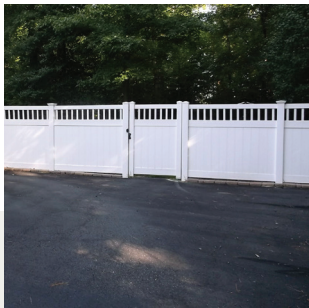
The Florence™

Height: 6', 7', 8'
 Width: 6' & 8'
 Picket Style: 7/8" x 11.3"
 Tongue & Groove .055" (accents
 3/4" round black aluminum)
 Color:



The Edith™

Height: 6', 7', 8'
 Width: 6' & 8'
 Picket Style: 7/8" x 11.3"
 Tongue & Groove .055"
 (accents 7/8" x 1.5")
 Color:



The Edmonton™

Height: 6' & 8'
 Width: 6' & 8'
 Picket Style: 7/8" x 11.3"
 Tongue & Groove .055"
 (accents 7/8" x 1.5")
 Color:



The Cyrus™

Height: 6', 7', 8'
 Width: 6' & 8'
 Picket Style: 7/8" x 11.3"
 Tongue & Groove .055"
 (accents 1.25" x 1.25")
 Color:



Pool Fencing



Surround your patio, pool or lawn with one of our eye-catching pool fences. These attractive designs add a sense of style to any landscape. While perfect around pools, our pool fencing also looks great in any area of your yard. Our exclusive manufacturing process ensures that all of our vinyl products are resistant to water and humidity for lasting beauty. Our pool style gates include self-closing hinges and a pool safety latch. Plus, the bottom rail is reinforced with aluminum to ensure superior strength.

A beautiful finish that always looks new and resists water and humidity.



The Waldston™

Height: 4' & 5'(w/ Mid-Rail)
Width: 6' & 8'
Picket Style: 7/8" x 3" & 7/8" x 1.5" alternating
(3.7" picket spacing)

Color:

33 lb¹



The Gillingham™

Height: 4' & 5'(w/ Mid-Rail)
Width: 6' & 8'
Picket Style: 7/8" x 1.5"
(3.7" picket spacing)

Color:

28 lb¹

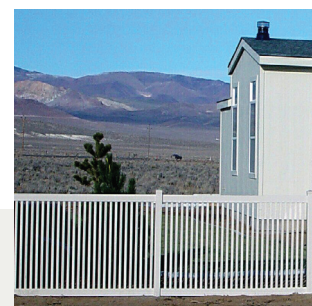


The Stanton™

Height: 4' & 5'(w/ Mid-Rail)
Width: 6' & 8'
Picket Style: 7/8" x 3"
(1.7" picket spacing)

Color:

40 lb¹



The Harwich™

Height: 4' & 5'(w/ Mid-Rail)
Width: 6' & 8'
Picket Style: 7/8" x 1.5"
(1.7" picket spacing)

Color:

36 lb¹

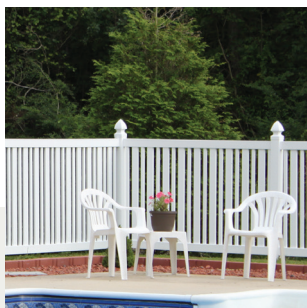


The Cargill™

Height: 4' & 5'(w/ Mid-Rail)
Width: 6' & 8'
Picket Style: 7/8" x 3" & 7/8" x 1.5" alternating
(3.7" picket spacing)

Color:

31 lb¹

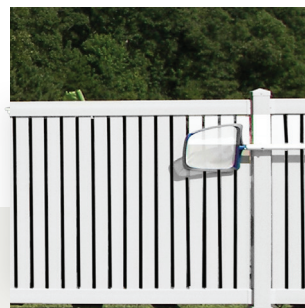


The Austell™

Height: 4' & 5'(w/ Mid-Rail)
Width: 6' & 8'
Picket Style: 7/8" x 3" & 7/8" x 1.5" alternating
(1.7" picket spacing)

Color:

39 lb¹



The Reading™

Height: 4' & 5'(w/ Mid-Rail)
Width: 6' & 8'
Picket Style: 7/8" x 3"
(0.6" picket spacing)

Color:

48 lb¹



Semi-Privacy Fencing

Our semi-privacy fencing offers just the right amount of seclusion for homeowners who want privacy without complete isolation. The pickets used in our semi-privacy fences slide through the routed rails for a true multi-dimensional look. The superior strength and durability of our fence are due in part to the fact that the bottom rail is reinforced with an aluminum insert.

Just the right amount of seclusion and style.



The Milton®

Height: 5' & 6'
 Width: 6' & 8'
 Picket Style: 7/8" x 3"
 (7/8" picket spacing)
 Color:



The Harlow®

Height: 5' & 6'
 Width: 6' & 8'
 Picket Style: 7/8" x 3"
 & 7/8" x 1.5" alternating
 (7/8" picket spacing)
 Color:



The Grenada™

Height: 5' & 6'
 Width: 6' & 8'
 Picket Style: 7/8" x 6"
 (7/8" picket spacing)
 Color:



The Weldon™

Height: 5' & 6'
 Width: 6' & 8'
 Picket Style: 7/8" x 3"
 & 7/8" x 6" alternating
 (7/8" picket spacing)
 Color:



The Fairfax™

Height: 6'
 Width: 8'
 Picket Style: 7/8" x 3"
 horizontal
 (0.9" picket spacing)
 Color:



The Marlow™

Height: 5' & 6'
 Width: 6' & 8'
 Picket Style: 7/8" x 6"
 (7/8 picket spacing)
 Color:



Color Options: White: Tan: Khaki:

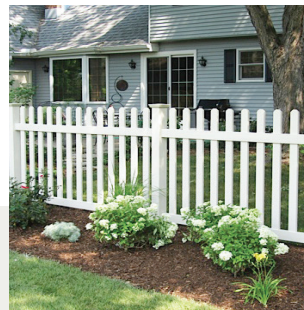
¹Average weight noted is for a 6'x8' panel.



Picket Fencing

Our classic picket fencing can dramatically change the look of your yard, adding beauty and warmth to the landscape. From simple straight-top to decorative scalloped-top designs, you'll find a wide selection of styles to suit your tastes. Plus, with a Durables® fence, you are assured years of durable performance and maintenance-free satisfaction.

A simple solution that adds ornamental style to your landscape.



The Burton™

Height: 3', 4' & 5'
 Width: 6' & 8'
 Picket Style: 7/8" x 3"
 Picket Caps: Dogear or Spade (3" picket spacing)
 Bottom Rail: 1.5" x 5.5"
 Color:

35 lb¹

The Grantham™

Height: 3', 4' & 5'
 Width: 6' & 8'
 Picket Style: 7/8" x 3"
 Picket Caps: Dogear or Spade (3" picket spacing)
 Bottom Rail: 1.5" x 5.5"
 Color:

35 lb¹

The Murton™

Height: 3', 4' & 5'
 Width: 6' & 8'
 Picket Style: 7/8" x 3"
 Picket Caps: Dogear or Spade (3" picket spacing)
 Bottom Rail: 2" x 3.5"
 Color:

36 lb¹

The Darlington™

Height: 3', 4' & 5'
 Width: 6' & 8'
 Picket Style: 7/8" x 3"
 Picket Caps: Dogear or Spade (3" picket spacing)
 Bottom Rail: 2" x 3.5"
 Color:

36 lb¹



The Sudbury™

Height: 3', 4' & 5'
 Width: 6' & 8'
 Picket Style: 7/8" x 3"
 Picket Caps: Dogear or Spade (1.7" picket spacing)
 Bottom Rail: 2" x 3.5"
 Color:

41 lb¹

The Rochdale™

Height: 3', 4' & 5'
 Width: 6' & 8'
 Picket Style: 7/8" x 3"
 Picket Caps: Dogear or Spade (1.7" picket spacing)
 Bottom Rail: 2" x 3.5"
 Color:

41 lb¹

The Milano™

Height: 3' & 4'
 Width: 6' & 8'
 Picket Style: 1.5" x 1.5"
 Picket Caps: Spade (2" picket spacing)
 Bottom Rail: 2" x 6"
 Color:

45 lb¹

Picket Fencing continued on next page >>



The Preston™

Height: 3', 4' & 5'
 Width: 6' & 8'
 Picket Style: 7/8" x 1.5"
 Picket Caps: Spade
 (3.7" picket spacing)
 Bottom Rail: 2" x 3.5"
 Color:



The Stanley™

Height: 3', 4' & 5'
 Width: 6' & 8'
 Picket Style: 7/8" x 1.5"
 Picket Caps: Spade
 (3.7" picket spacing)
 Bottom Rail: 2" x 3.5"
 Color:



The Durham™

Height: 3', 4' & 5'
 Width: 6' & 8'
 Picket Style: 7/8" x 1.5"
 Picket Caps: Spade
 (1.7" picket spacing)
 Bottom Rail: 2" x 3.5"
 Color:



The Ashborne™

Height: 3', 4' & 5'
 Width: 6' & 8'
 Picket Style: 7/8" x 1.5"
 Picket Caps: Spade
 (1.7" picket spacing)
 Bottom Rail: 2" x 3.5"
 Color:



The Classic™

Height: 3' & 4'
 Width: 6' & 8'
 Picket Style: 1.5" x 1.5"
 Picket Caps: Spade
 (2" picket spacing)
 Bottom Rail: 2" x 6"
 Color:





Horse Fencing

Our horse fencing provides a physical barrier that is visible and safe for horses and livestock. It defines property boundaries, adds value to your estate, is low maintenance and offers superior impact resistance. Choose from elegant styles of durable vinyl fencing paired with best-in-class customer service and lifetime implementation support.

Beautiful, durable and top-grade quality.



2 Rail

Post: 5" x 5" square post
 Post Length: 5' & 6'
 Rail Spacing: 11"
 Rail Size: 1.5" x 5.5"
 Color:



3 Rail

Post: 5" x 5" square post
 Post Length: 6.5', 7' & 7.5'
 Rail Spacing: 11"
 Rail Size: 1.5" x 5.5"
 Color:



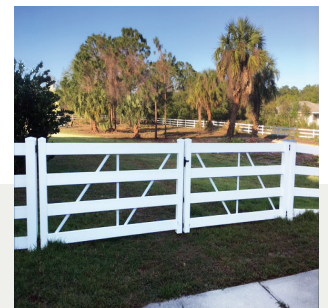
4 Rail

Post: 5" x 5" square post
 Post Length: 7', 7.5' & 8'
 Rail Spacing: 9"
 Rail Size: 1.5" x 5.5"
 Color:



Cross Buck

Post: 5" x 5" square post
 Post Length: 7', 7.5' & 8'
 Rail Size: 1.5" x 5.5"
 Color:



2-Rail Diamond Rail™

Post: 5" x 5" square post
 Post Length: 5' & 6'
 Rail Size: 3"x3"
 Rail Spacing: 11"
 Color:
 (Matching gate unavailable)

3-Rail Diamond Rail™

Post: 5" x 5" square post
 Post Length: 5' & 6'
 Rail Size: 3"x3"
 Rail Spacing: 11"
 Color:
 (Matching gate unavailable)

Single Gate

Sizes: Up to 8' wide
 Hardware: Commercial grade stainless steel powder-coated black
 Color:

Double Gate

Sizes: Up to 16' wide, 2 gates, latch in the center
 Hardware: Commercial grade stainless steel powder-coated black; includes 2 drop rods
 Color:

Gates are available in kit form to match Durables® Horse Fencing.



Bottom Rail Reinforcement

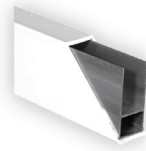
Providing superior strength and durability.

Most of our fence styles come with an metal insert in the bottom rail to ensure maximum strength and lasting durability.

Bottom Rail Reinforcements



Metal
"I" Channel



Metal
"H" Channel



Fence Gates

Blending optimal function and long-term performance.

You'll find matching gates for all of our fences that are designed with function and long-term performance in mind. We use the best gate hardware in the industry. Manufactured with rust-free, high-tech engineered polymer and stainless steel components, our gate locks, latches and hinges have a limited lifetime warranty.



Our gate post inserts add extra strength and stability to your gate to ensure years of uninterrupted gate operation.



Vinyl Fence Posts

Strong, durable and maintenance-free.

Manufactured from the highest grade materials, our fence posts are the strongest, most durable, low maintenance fence posts you'll find anywhere.



Blank Post

Post Width: 4" x 4" & 5" x 5"
Post Height: 72", 84", 96",
105", 120" & 140"

Color:    
 



End Post

Post Width: 4" x 4" & 5" x 5"
Post Height: 72", 84", 96",
105", 120" & 140"

Color:    
 



Line Post

Post Width: 4" x 4" & 5" x 5"
Post Height: 72", 84", 96",
105", 120" & 140"

Color:    
 



Corner Post

Post Width: 4" x 4" & 5" x 5"
Post Height: 72", 84", 96",
105", 120" & 140"

Color:    
 



3-Way Post

Post Width: 4" x 4" & 5" x 5"
Post Height: 72", 84", 96",
105", 120" & 140"

Color:    
 



Gate End Post

Post Width: 4" x 4" & 5" x 5"
Post Height: 72", 84", 96",
105", 120" & 140"

Color:      
(Metal insert included)



Gate Blank Post

Post Width: 4" x 4" & 5" x 5"
Post Height: 72", 84", 96",
105", 120" & 140"

Color:      
(Metal insert included)



Fast 2K

Size: 32.8 oz
FAST 2K is a more convenient
alternative to concrete for
setting fence posts.

Note: Posts are custom routed to match each specific style of fence.
For example, posts for the Augusta fence will have 3 route holes.

*140" post is only available in 5" x 5" post size

U-mounts

Custom installation made easy.

Available in: White, Tan or Khaki (unless noted) Replace the "X" in the product code with the selected color option:

- White= W
- Tan= T
- Khaki= K
- Gray= G



1.5" x 5.5" U-mount
AXBR-UMOUNT-1.5X5.5



2" x 3.5" U-mount
AXBR-UMOUNT-2X3.5



2" x 6" U-mount
AXBR-UMOUNT-2X6



1.5" x 5.5" External U-mount
AXBR-UMOUNTEXT-1.5X5.5

Fasteners sold separately.

Post Hole Covers

Providing a clean look to your finished project.



1.5" x 5.5" Post Hole Cover
AXCP-CVR-1.5X5.5



2" x 3.5" Post Hole Cover
AXCP-CVR-1.75X3.5



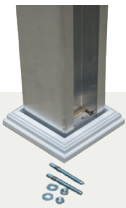
Hinged Screw Cap
AXCP-SCREWCAP
(fits a #10 pan head screw)



Self Tapping Screw
AMFA-SCREWTAP-1.0SS

Mounts

Simplify your post installation.



5" x 5" x 54" Concrete Mount
AXPT-CMOUNT-5X54
(includes mounting hardware and post skirt)



4" x 4" x 36" Concrete Mount
AXPT-CMOUNT-4X36
(includes mounting hardware and post skirt- can extend to 42")

DURABLES RAILING SYSTEMS: THE BEST CHOICE FOR STRENGTH AND DURABILITY

AVAILABLE IN A RANGE OF ATTRACTIVE COLORS

EASY TO MAINTAIN

FULLY CUSTOMIZABLE

IMPACT- AND WEATHER-RESISTANT

CODE COMPLIANT

FREE SHIPPING

A MINIMUM ORDER APPLIES

Classic Vinyl Railing

The best choice for strong & durable railing.



The Waltham™

Color:

Rail: 2" x 3.5" top & bottom rail

Railing Height: 36" & 42" (bottom rail 2" from the ground)

Spindle Style: .875" x 1.5" Rectangular Spindle

Length: 4', 6' & 8' straight; 6' & 8' stair

Metal Inserts:

Top Rail Insert – included

Bottom Rail Insert – optional

Stair Rail–Top Rail Insert – included

Bottom Rail Insert – optional

IRC¹

Brackets Included

The Brighton™

Color:

Rail: T-Rail top rail & 2" x 3.5" bottom rail

Railing Height: 36" & 42" (bottom rail 2" from the ground)

Spindle Style: .875" x 1.5" Rectangular Spindle

Length: 4', 6' & 8' straight; 6' & 8' stair

Metal Inserts:

Top Rail Insert – included

Bottom Rail Insert – optional

Stair Rail–Top Rail Insert – included

Bottom Rail Insert – optional

IRC¹

Brackets Included



The Hudson

Color:

Rail: T-Rail top rail & 2" x 3.5" bottom rail

Railing Height: 36" & 42" (bottom rail 2" from the ground)

Spindle Style: .75" Black Round Aluminum

Length: 4', 6' & 8'

Stair Rail Length: 6' & 8'

Metal Inserts:

Top Rail Insert – included

Bottom Rail Insert – included

Stair Rail–Top Rail Insert – included

Bottom Rail Insert – included

IRC¹

Brackets Included

**The brackets included with the classic stair railing are designed for angles of 28° to 42°.*

Color Options: White: Tan: Khaki:

¹Railing height noted is the installed height.

Premium Vinyl Railing

Attractive designs manufactured from the highest quality vinyl, up to 50% stronger than other brands.



The Manchester™ Railing

Color:

Rail: 2" x 3.5" top & bottom rail

Railing Height: 36" & 42" (bottom rail 2" from the ground)

Spindle Style: 1.5" Square Spindle

Length: 4', 6' & 8' straight; 6' & 8' stair

Aluminum Inserts:

Top Rail Insert–included

Bottom Rail Insert–optional

Stair Rail–top & bottom rail inserts are included

IRC¹ & IBC¹

Brackets Included



The Harrington™ Railing

Color:

Rail: T-Rail top rail & 2" x 3.5" bottom rail

Railing Height: 36" & 42" (bottom rail 2" from the ground)

Spindle Style: 1.5" Square Spindle

Length: 4', 6', 8' & 10' straight; 6' & 8' stair

Aluminum Inserts:

Top Rail Insert–included

Bottom Rail Insert–optional

Stair Rail–top & bottom rail inserts are included

IRC¹ & IBC¹

Brackets Included



The Westport™ Railing

Color:

Rail: 2" x 3.5" top & bottom rail

Railing Height: 36" & 42" (bottom rail 2" from the ground)

Spindle Style: 1.5" Colonial Spindle

Length: 4', 6' & 8' straight; 6' & 8' stair

Aluminum Inserts:

Top Rail Insert–included

Bottom Rail Insert–optional

Stair Rail–top & bottom rail inserts are included

IRC¹ & IBC¹

Brackets Included



The Ashington™ Railing

Color:

Rail: T-Rail top rail & 2" x 3.5" bottom rail

Railing Height: 36" & 42" (bottom rail 2" from the ground)

Spindle Style: 1.5" Colonial Spindle

Length: 4', 6', 8' & 10' straight; 6' & 8' stair

Aluminum Inserts:

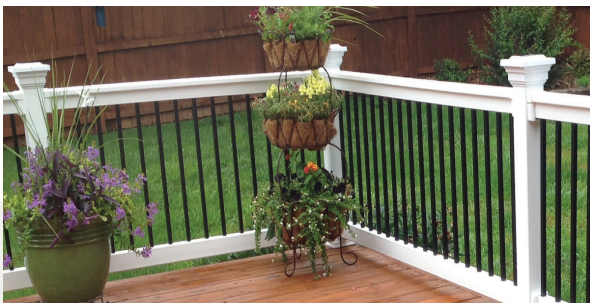
Top Rail Insert–included

Bottom Rail Insert–optional

Stair Rail–top & bottom rail inserts are included

IRC¹ & IBC¹

Brackets Included



The Bradford™ Railing

Color:

Rail: T-Rail top rail & 2" x 3.5" bottom rail

Railing Height: 36" & 42" (bottom rail 2" from the ground)

Spindle Style: .75" Black Square Aluminum Spindle

Length: 4', 6', 8' & 10' straight; 6' & 8' stair

Aluminum Inserts:

Top Rail Insert–included

Bottom Rail Insert–included

Stair Rail–top & bottom rail inserts are included

IRC¹ & IBC¹

Brackets Included



The Kirklees™ Railing

Color:

Rail: T-Rail top rail & 2" x 3.5" bottom rail

Railing Height: 36" & 42" (bottom rail 2" from the ground)

Spindle Style: .75" Black Round Aluminum Spindle

Length: 4', 6', 8' & 10' straight; 6' & 8' stair

Aluminum Inserts:

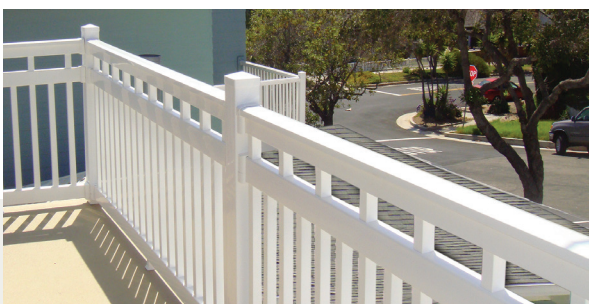
Top Rail Insert–included

Bottom Rail Insert–included

Stair Rail–top & bottom rail inserts are included

IRC¹ & IBC¹

Brackets Included



The Dorset™ Railing

Color:

Rail: T-Rail top rail & 2" x 3.5" bottom and mid rail

Railing Height: 42" (bottom rail 2" from the ground)

Spindle Style: 1.5" Square Spindle

Length: 4', 6', 8' & 10' straight

Aluminum Inserts:

Top Rail Insert–included

Bottom Rail Insert–optional

Stair Rail–N/A

IRC¹ & IBC¹

Brackets Included



The Franklin™ Railing

Color:

Rail: T-Rail black top rail & 2" x 3.5" white bottom rail

Railing Height: 36" & 42" (bottom rail 2" from the ground)

Spindle Style: .75" Black Round Aluminum

Length: 6', 8' & 10' straight, 6' & 8' stair

Aluminum Inserts:

Top Rail Insert–included

Bottom Rail Insert–included

Stair Rail–included

IRC¹ & IBC¹

Brackets Included

**The brackets included with the premium stair railing are designed for angles of 30° to 40°.*



The Amherst™ Railing

Color:

Rail: 2" x 3.5" top & bottom rail

Railing Height: 36" & 42" (bottom rail 2" from the ground)

Spindle Style: .75 Black Round Aluminum Spindle

Length: 4', 6' & 8' straight, 6' & 8' stair

Aluminum Inserts:

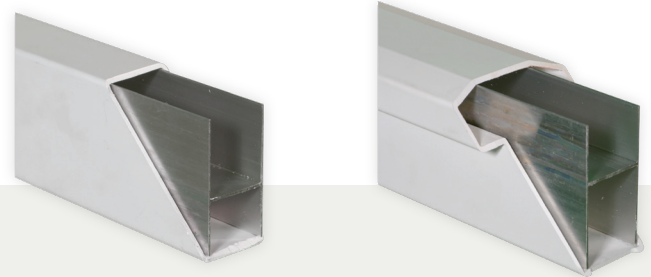
Top Rail Insert–included

Bottom Rail Insert–included

Stair Rail–N/A

IRC¹ & IBC¹

Brackets Included



Aluminum Insert (2" x 3.5" & T-Rail)

The aluminum inserts needed to meet testing requirements are included with each railing kit. Additional aluminum inserts are available for custom installations.

Size: 2" x 3.5" x 48"

Size: 2" x 3.5" X 72"

Size: 2" x 3.5" X 96"

Size: 2" x 3.5" X 120"

Deck Board Railing

Our premium grade vinyl railing with a decorative top rail accent.



The Bexley™ Deck Board Railing

Deck board not included- match to your specific deck

Color:

Rail: 2" x 3.5" top & bottom rail

Railing Height: 36" & 42" (bottom rail 2" from the ground)

Spindle Style: 1.5" Square Spindle

Length: 4', 6' & 8' straight; 6' & 8' stair

Aluminum Inserts:

Top Rail Insert-included

Bottom Rail Insert-optional

Stair Rail-top & bottom rail inserts are included

IRC¹ & IBC¹

Brackets Included

The Hastings™ Deck Board Railing

Deck board not included- match to your specific deck

Color:

Rail: 2" x 3.5" top & bottom rail

Railing Height: 36" & 42" (bottom rail 2" from the ground)

Spindle Style: 1.5" Colonial Spindle

Length: 4', 6' & 8' straight; 6' & 8' stair

Aluminum Inserts:

Top Rail Insert-included

Bottom Rail Insert-optional

Stair Rail-top & bottom rail inserts are included

IRC¹ & IBC¹

Brackets Included



The Halton™ Deck Board Railing

Deck board not included- match to your specific deck

Color:

Rail: 2" x 3.5" top & bottom rail

Railing Height: 36" & 42" (bottom rail 2" from the ground)

Spindle Style: .75" Square Aluminum Spindle

Length: 4', 6' & 8' straight; 6' & 8' stair

Aluminum Inserts:

Top Rail Insert-included

Bottom Rail Insert-included

Stair Rail-top & bottom rail insert - included

IRC¹ & IBC¹

Brackets Included

The Warrington™ Deck Board Railing

Deck board not included- match to your specific deck

Color:

Rail: 2" x 3.5" top & bottom rail

Railing Height: 36" & 42" (bottom rail 2" from the ground)

Spindle Style: .75" Round Aluminum Spindle

Length: 4', 6' & 8' straight; 6' & 8' stair

Aluminum Inserts:

Top Rail Insert-included

Bottom Rail Insert-included

Stair Rail-top & bottom rail inserts are included

IRC¹ & IBC¹

Brackets Included

Vinyl Railing Gates

Blending optimal function and long-term performance, with top-of-the-line hardware.



.875" x 1.5" Rectangular Spindle

Style: Waltham & Brighton

Color:

Rail: 2" x 3.5" or T-Rail top rail

Height: 36" & 42" (bottom rail 2" from the ground)



1.5" Square Spindle

Style: Manchester, Harrington & Bexley

Color:

Rail: 2" x 3.5" or T-Rail top rail

Height: 36" & 42" (bottom rail 2" from the ground)



1.5" Colonial Spindle

Style: Westport, Ashington & Hastings

Color:

Rail: 2" x 3.5" or T-Rail top rail

Height: 36" & 42" (bottom rail 2" from the ground)



1.5" Square Spindle

Style: Dorset

Color:

Rail: T-Rail top rail

Height: 42" (bottom rail 2" from the ground)



.75" Square Aluminum Spindle

Style: Bradford & Halton

Color:

Rail: T-Rail top rail

Height: 36" & 42" (bottom rail 2" from the ground)



.75" Round Aluminum Spindle

Style: Kirklees, Warrington & Hudson

Color:

Rail: T-Rail top rail

Height: 36" & 42" (bottom rail 2" from the ground)

Gate kits include commercial grade polyvinyl hardware:



Key-lockable latch



Self-closing hinges

Wraps

For use around new or existing wood posts.

Available in: White, Tan or Khaki (unless noted) Replace the "X" in the product code with the selected color option:

- White= W
- Tan= T
- Khaki= K



Smooth Vinyl Post Wrap

Size: 4" x 4" x 96"– AXPT-WRAP-4X96

Size: 4" x 4" x 120"– AXPT-WRAP-4X120

Size: 6" x 6" x 96"– AXPT-WRAP-6X96

Size: 6" x 6" x 120"– AXPT-WRAP-6X120

*Installed size is 0.25" larger than post wrap size

*For use with Adjustable Post Skirt only

Fluted Vinyl Post Wrap (White only)

Size: 4" x 4" x 102"– AWPT-WRAPFLUTELBP-4X102

Size: 4" x 4" x 120"– AWPT-WRAPFLUTELBP-4X120

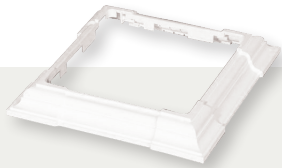
Size: 6" x 6" x 102"– AWPT-WRAPFLUTELBP-6X102

Size: 6" x 6" x 120"– AWPT-WRAPFLUTELBP-6X120

Size: 8" x 8" x 102"– AWPT-WRAPFLUTELBP-8X102

Wrap Skirts

Decorative trim at the base of each post provides a finished look.



4-Piece Adjustable Post Skirt

Size: ADJUSTABLE–AXPT-WRAPTRIM4PC-ADJ

*Fits a 3", 3.5", 4", 5", 6" & 6.5" post

Vinyl Sleeves

Attractive covers that fit over our post mounts.

Available in: White, Tan or Khaki (unless noted) Replace the "X" in the product code with the selected color option:

- White= W
- Tan= T
- Khaki= K



Vinyl Blank Post Sleeve Kit

(Includes external post cap and post skirt)

- Size: 4" x 4" x 39"-WXR-POSTKIT-4X39
- Size: 4" x 4" x 45"-WXR-POSTKIT-4X45
- Size: 4" x 4" x 54"-WXR-POSTKIT-4X54



Vinyl Blank

- Size: 4" x 4" x 39"-LXPT-BLANK-4X39
- Size: 4" x 4" x 45"-LXPT-BLANK-4X45
- Size: 4" x 4" x 72"-LXPT-BLANK-4X72
- Size: 4" x 4" x 84"-LXPT-BLANK-4X84
- *More sizes available, and will fit over 4"x4" treated wood



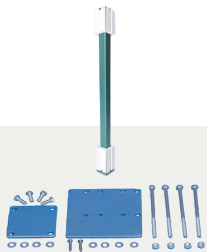
Vinyl Newel: Colonial

(White only)

- Size: 4" x 4" x 48"-LWPT-NEWELCOL-4X48

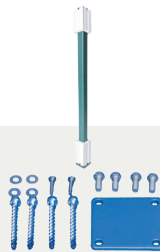
Mounts

Simplify your post installation.



Railing Post Mount with Wood Fasteners

- AMPT-HDMOUNTWD-4X36
- AMPT-HDMOUNTWD-4X42



Railing Post Mount with Concrete Fasteners

- AMPT-HDMOUNTCC-4X36
- AMPT-HDMOUNTCC-4X42

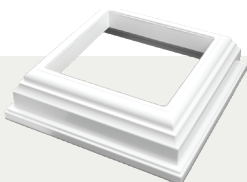


General Mount

NOT FOR COMMERCIAL APPLICATION
(mounting hardware sold separately)
AMPT-GENMOUNT-4

Sleeve Skirts

Decorative trim at the base of each post provides a finished look.



Post Skirt

- Size: 4" x 4"-AXPT-SKIRT-4
- Size: 5" x 5"-AXPT-SKIRT-5
- Size: 6" x 6"-AXPT-SKIRT-6



2-Piece Federation Post Skirt

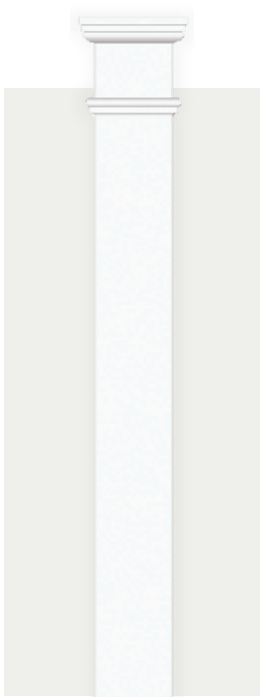
- Size: 4" x 4"-AXPT-SKIRT2PC-4
- Size: 5" x 5"-AXPT-SKIRT2PC-5
- Size: 6" x 6"-AXPT-SKIRT2PC-6

Vinyl Columns

Supported by extruded aluminum for lightweight durability and superior strength.

Available in: White, Tan or Khaki (unless noted) Replace the "X" in the product code with the selected color option:

- White= W
- Tan= T
- Khaki= K

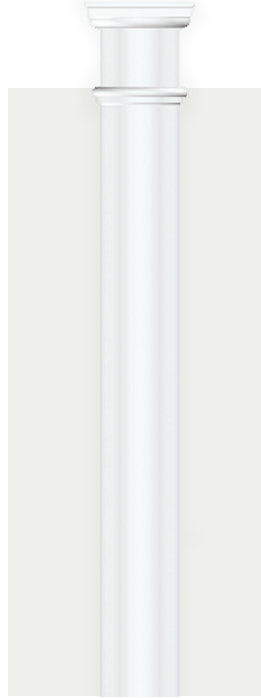


Square Column

(White only)

Size: 8" x 8" x 96"
LWPT-SQCOLKIT-8X96

Size: 8" x 8" x 120"
LWPT-SQCOLKIT-8X120
(tested load of 11,000 lb.)

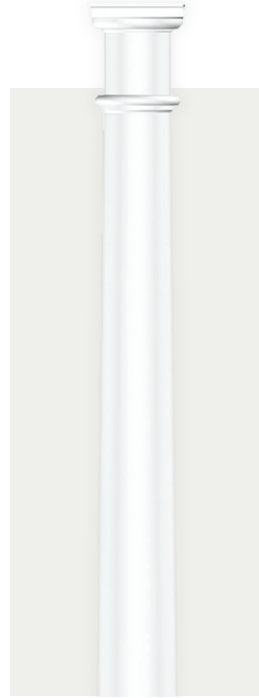


Round Straight Column

(White only)

Size: 8" x 8" x 108"
LWPT-RNDSTCOLKIT-108

(tested load of 18,000 lb.)



Round Tapered Column

(White only)

Size: 8" x 8" x 108"
LWPT-RNDTPCOLKIT-108

Size: 8" x 8" x 120"
LWPT-RNDTPCOLKIT-120
(tested load of 18,000 lb.)



Colonial Structural

Size: 4" x 4" x 108"
LXPT-PPCOL-4X108

Size: 5" x 5" x 108"
LXPT-PPCOL-5X108
(tested load of 11,000 lb.)



Square Structural

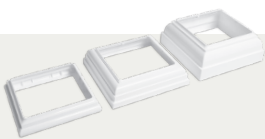
Size: 4" x 4" x 108"
LXPT-PPSQ-4X108

Size: 5" x 5" x 108"
LXPT-PPSQ-5X108

Size: 6" x 6" x 108"
LXPT-PPSQ-6X108
(tested load of 11,000 lb.)

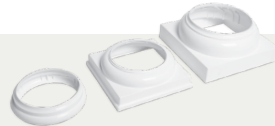
(Top & bottom skirts/trim kits are not included, but can be purchased separately)

Trim Kits



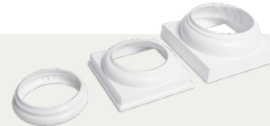
Square Column

AWPT-BASE&COLLAR-8X8



Round Straight Column

AWPT-BASE&COLLAR-RNDST



Round Tapered Column

AWPT-BASE&COLLAR-RNDTP

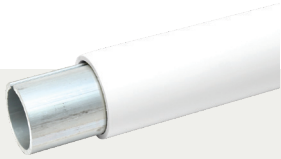
Use skirts on page 23 or 24 with the Colonial Structural and Square Structural columns.

Secondary (ADA) Railing

All the parts you need for ADA-compliant installations.

Available in: White, Tan, Khaki & Black (unless noted) Replace the "X" in the model number with the selected color option:

- White= W
- Tan= T
- Khaki= K
- Black= B



104" Rail with Stiffener
NXRA-ADARAIL-1.5X104



Hand Rail Bracket Kit
NXRA-ADARAILBRK-1.5



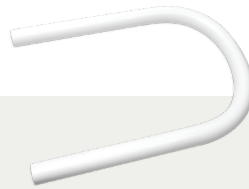
Straight Wall Return Kit
NXRA-ADASTRTN-1.5



Bracket Wall Return Cover Plate (4/bag)
NXRA-ADACVRPLT-1.5



Post Return
NXRA-ADAPTRTN-16.5X6



End Loop
NXRA-ADALOOP-18X12



90° Wall Return Kit w/Joiner
NXRA-ADAWALLJOIN-1.5



90° Exterior Corner
NXRA-ADACORNER-1.5



90° Exterior Corner w/Joiner
NXRA-ADACORNJOIN-1.5



90° Interior Corner
NXRA-ADACORNERINS-1.5



Straight Joiner (4/bag)
NMRA-ADASTJOIN-6



Adjustable Joiner (4/bag)
NMRA-ADAJOINADJ-1.5



Joint Ring (4/bag)
NXRA-ADAJTRING-1.5



Rail End Cap (4/bag)
NXCP-ADARAILEND-1.5



External Adjustable Joiner with Male Ends and Joint Rings
NXRA-ADAEXADJOIN-1.5

All parts shown are available in both residential & commercial grade. Residential grade shown.

Classic Brackets

Secure, sturdy brackets for Waltham, Brighton and Hudson railing.

Available in: White, Tan or Khaki (unless noted) Replace the "X" in the product code with the selected color option:

- White= W
- Tan= T
- Khaki= K



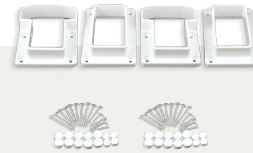
2" x 3.5" 1-Piece
Straight Kit

AXBR-CVSTRGHTKIT-2X3.5



2" x 3.5" 1-Piece
Stair Kit

AXBR-CVSTAIRKIT-2X3.5



T-Rail & 2" x 3.5"
1-Piece Straight Kit

AXBR-CVSTRGHTKIT-TRAIL



T-Rail & 2" x 3.5"
1-Piece Stair Kit




AXBR-CVSTAIRKIT-TRAIL

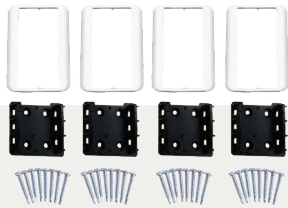
**Classic stair rail brackets are designed for angles of 28° to 42°.*

Premium Brackets

Dependable accessories for our premium line of railing.

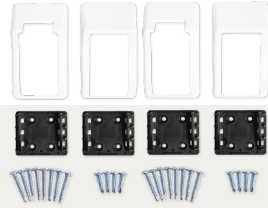
Available in: White, Tan or Khaki (unless noted) Replace the "X" in the product code with the selected color option:

-  White= W
-  Tan= T
-  Khaki= K



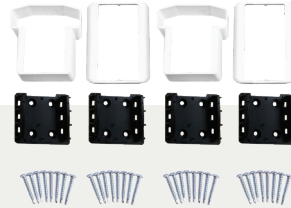
2" x 3.5" 2-Piece Straight Kit

AXBR-2PCSTRGHTKIT-2X3.5



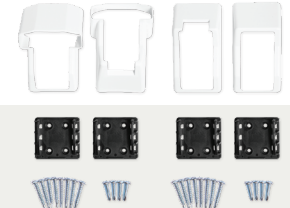
2" x 3.5" 2-Piece Stair Kit

AXBR-STAIRKIT-2X3.5



T-Rail & 2" x 3.5" 2-Piece Straight Kit

AXBR-STRGHTKIT-TRAIL



T-Rail & 2" x 3.5" 2-Piece Stair Kit

AXBR-2PCSTRGHTKIT-TRAIL

**Premium stair rail brackets are designed for angles of 30° to 40°.*



Deck Board Clips

AMBR-DECKCLIP-KIT



Deck Board Stair Bracket Set

AXBR-STAIRSETDB-2X3.5

Classic and Premium Brackets

Universal accessories offer ultimate versatility.

Available in: White, Tan or Khaki (unless noted) Replace the "X" in the product code with the selected color option:

- White= W
- Tan= T
- Khaki= K



2" x 3.5" Adjustable Straight Kit

AXBR-WIZANGLE-2X3.5



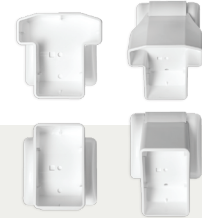
T-Rail & 2" x 3.5" Adjustable Straight Kit

AXBR-WIZANGLE-TRAIL



2" x 3.5" Adjustable Stair Kit

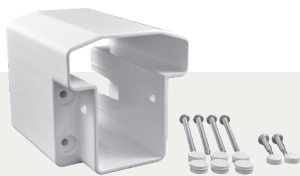
AXBR-WIZSTAIR-2X3.5



T-Rail & 2" x 3.5" Adjustable Stair Kit

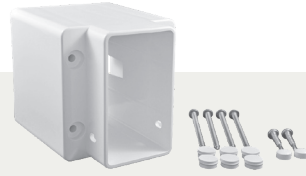
AXBR-WIZSTAIR-TRAIL

**Brackets above are designed for angles of 15° to 45°.*



T-Rail Field Cut Bracket

AXBR-FIELD-TRAIL



2" x 3.5" Field Cut Bracket

AXBR-FIELD-2X3.5



45° Classic Bracket T-Rail Adapter

AXBR-CV45ADAPTER-TRAIL



45° Classic Bracket 2" x 3.5" Adapter

AXBR-CV45ADAPTER-2X3.5

**Brackets above accommodate a vertical or horizontal custom angle.*

Foot Blocks

For added strength when splitting a rail section.



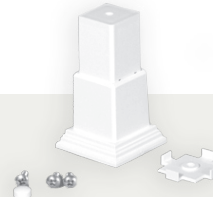
8" Column Classic Bracket Adapter

AXBR-CVCOLADAPTER-8



8" Column Classic Stair Bracket Adapter

AXBR-CVCOLSTAIRADP-8




Premium Foot Block

AXRA-FOOTBLOCK-1.5



Classic Foot Block

AXRA-CVFOOTBLOCK-1.5X1.5X8



DURABLES ALUMINUM FENCING & RAILING:

LOW MAINTENANCE

PREMIUM QUALITY & DURABILITY

IMPACT- AND WEATHER-RESISTANT

FREE SHIPPING

A MINIMUM ORDER APPLIES

Aluminum Fencing

A classy yet low-maintenance, economical fencing option.

Manufactured from the best aluminum in the industry, our aluminum fencing offers strength and security plus it looks great! Proven not to rust or corrode, aluminum fencing is the perfect addition to your yard.



The Parma Aluminum Fencing

Height: 4' & 5'
Width: 6'
Gate Width: Single 4', 5' Double 8' & 10'
Picket Style: Flat top
Color:



The Canton Aluminum Fencing

Height: 4' & 5'
Width: 6'
Gate Width: Single 4', 5' Double 8' & 10'
Picket Style: Alternating spear flat top
Color:



The Beagle Aluminum Fence

Height: 4'
Width: 6'
Gate Width: Single: 4' Double: 8'
Picket Style: Flat top
Color:

The Hamilton Aluminum Fencing

Height: 4.5'
Width: 6'
Gate Width: Single 4', 5' Double 8' & 10'
Picket Style: Flat top & flush bottom
Color:

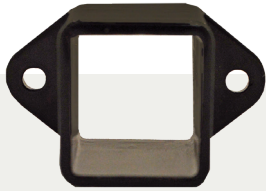
The Canfield Aluminum Fencing

Height: 4'
Width: 6'
Gate Width: Single 4', 5' Double 8' & 10'
Picket Style: Flat top & flush bottom
Color:

Aluminum Fencing Accessories

Expand your options with our matching fittings.

Black in stock. Additional colors available by special order.



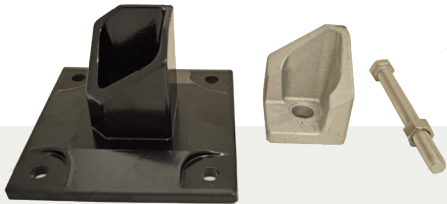
Residential Straight Rail End Bracket for Canfield
1" side wall
(Includes 3 #8-1" screws)



Commercial Straight Rail End Bracket for Canfield
1.5" side wall
(Includes 3 #8-1" screws)



Swivel Rail Bracket
(Includes 3 #8-1" screws)



Floor Flange
(fasteners not included)



Touch Up Paint



Screws
#10-1" screws



End Post



Line Post



Corner Post



Gate End Post

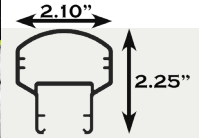
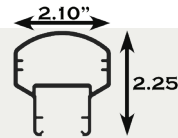
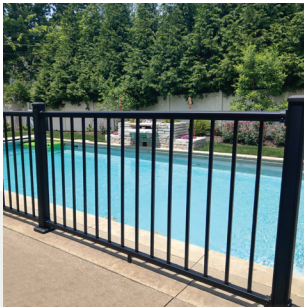


Gate Blank Post

Aluminum Railing

An economical alternative to traditional wrought iron.

Offering a sleek, clean look, our premium quality aluminum railing is manufactured from the best aluminum in the industry. No matter what Mother Nature decides to throw at it, it will not cause excessive corrosion or rust.



The Sterling

Color: Textured Black, Textured White

Rail: Bread-loaf molded top rail & 1.25" x 1.375" bottom rail

Railing Height: 36" & 42" (bottom rail 2" from the ground)

Spindle Style: .60" Square Spindles

Length: 6' & 8' straight; 6' & 8' stair

IRC² & IBC²

Brackets Included

(Stair brackets are designed for angles of 32° to 36°)

The Dalton

Color: Textured Black

Rail: Bread-loaf molded top rail & 1.5" x 1.25" bottom rail

Railing Height: 36" & 42" (bottom rail 2" from the ground)

Gate Width: 60"

Spindle Style: .75" Square Spindles

Length: 6', 8' & 10' straight; 6' & 8' stair

IRC³ & IBC³

Brackets Included

The Columbia

Color: Textured Black

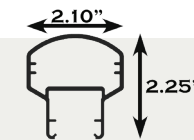
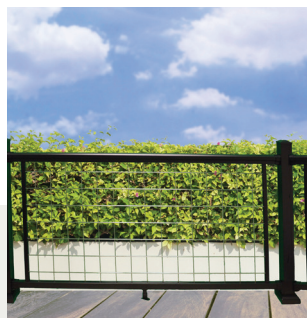
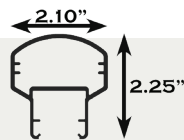
Rail: 2.25" x 2.10" Bread-loaf molded top rail & 1.5" x 1.25" bottom rail

Railing Height: 36" & 42" (bottom rail 2" from the ground)

Spindle Style: Silver aluminum rod

Length: 6' & 8' straight; 6' & 8' stair

Brackets Included



The Princeton

Color: Textured Black

Rail: 2.25" x 2.10" Bread-loaf molded top rail & 1.5" x 1.25" bottom rail

Railing Height: 36" & 42" (bottom rail 2" from the ground)

Spindle Style: Black aluminum rod

Length: 6' & 8' straight; 6' & 8' stair

Brackets Included

The Niles

Color: Textured Black

Rail: 2.25" x 2.10" Bread-loaf molded top rail & 1.5" x 1.25" bottom rail

Railing Height: 36" (bottom rail 2" from the ground)

Spindle Style: Mesh

Length: 6' & 8' straight; 6' stair

Brackets Included

**Railing height noted is the installed height.*

Aluminum Railing Accessories

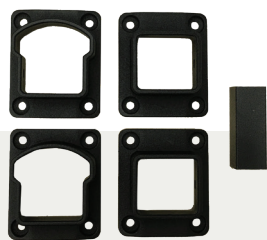
Expand your options with our matching fittings.



Sterling Aluminum Railing Post Kit

Includes post cap, 1-piece post skirt and base flange (fasteners not included).

Size: 2.5" x 2.5" x 39"
2.5" x 2.5" x 45"
2.5" x 2.5" x 54"



Sterling Aluminum Railing Straight Brackets

(includes fasteners and foot block)



Sterling Aluminum Railing Stair Brackets

(includes fasteners)



Sterling Aluminum Railing Adjustable Brackets

(adjust vertically & horizontally and includes fasteners)



Dalton Aluminum Railing Post Kit

Includes post cap, 2-piece post skirt and base flange (fasteners not included).

Size: 3" x 3" x 39"
3" x 3" x 45"
3" x 3" x 54"



Dalton Aluminum Railing Straight Brackets

(includes fasteners and foot block)



Dalton Aluminum Railing Universal Brackets

(includes fasteners)

Secondary (ADA) Aluminum Railing



Wall Return Aluminum Railing

Rail: 1.5" diameter
Length: 4', 6' or 8'
Attachment: (2) 90-degree wall returns, 8' includes additional middle mount
Hardware: Wall mounts with wood fasteners
Color:

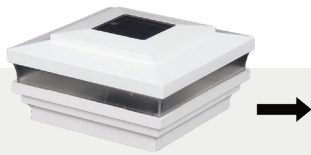


Straight Aluminum Railing

Rail: 1.5" diameter
Length: 4', 6' or 8'
Attachment: (2) wall mounts, 8' includes additional middle mount
Hardware: Wall mounts with wood fasteners
Color:

Solar Post Caps

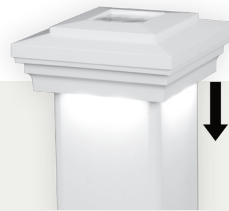
Enhance your look with architectural details and lighting.



Cape May Solar LED

Size: 4", 5" & 6"

Color:



Cape May Downward Solar LED

Size: 4" & 5"

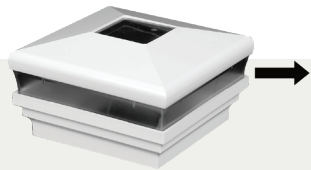
Color:



Classic Solar LED

Size: 3.5", 4" & 5"

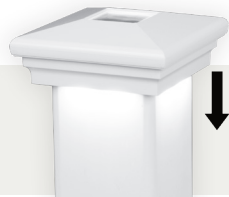
Color:



Neptune Solar LED

Size: 4", 5" & 6"

Color:



Neptune Downward Solar LED

Size: 4" & 5"

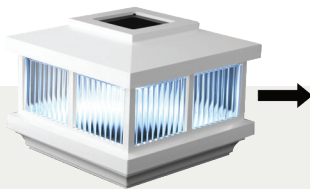
Color:



Galaxy Solar LED

Size: 3.5", 4" & 5"

Color:



Cambridge Solar LED

Size: 4", 5" & 6"

Color:

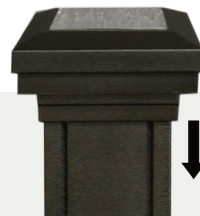
**Arrow indicates direction of light*



Ornamental Lens Solar LED

Size: 2.5" & 3"

Color: Textured Black & Textured White



Ornamental Downward Solar LED

Size: 2.5" & 3"

Color: Textured Black & Textured White

LED Low Voltage Post Caps

Enhance your look with architectural details and lighting.

(All low-voltage LED post caps work with power supplies and wiring harnesses on page 38)



Cape May Low Voltage LED

Size: 4" & 5"

Color:



Starter packs include 6 caps, wiring & a low voltage adapter.



Cape May Downward Low Voltage LED

Size: 4" & 5"

Color:



Haven Low Voltage LED

Size: 4" & 5"

Color:



Cape May Low Voltage LED Starter Pack



Expansion packs include 1 cap & wiring

Cape May Downward Low Voltage LED Starter Pack



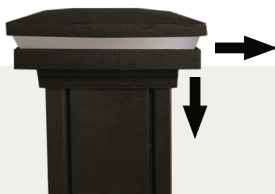
Haven Low Voltage LED Starter Pack



Cape May Low Voltage LED Expansion Pack

Cape May Downward Low Voltage LED Expansion Pack

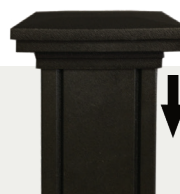
Haven Low Voltage LED Expansion Pack



Ornamental Combination Low Voltage LED

Size: 2.5" & 3"

Color:



Ornamental Downward Low Voltage LED

Size: 2.5" & 3"

Color:



Ornamental Lens Low Voltage LED

Size: 2.5" & 3"

Color:



Haven Downward Low Voltage LED

Size: 4" & 5"
Color:



Neptune Low Voltage LED

Size: 4" & 5"
Color:



Neptune Downward Low Voltage LED

Size: 4" & 5"
Color:

Starter packs include 6 caps, wiring & a low voltage adapter.



Haven Downward Low Voltage LED Starter Pack

Neptune Low Voltage LED Starter Pack

Neptune Downward Low Voltage LED Starter Pack

Expansion packs include 1 cap & wiring



Haven Downward Low Voltage LED Expansion Pack

Neptune Low Voltage LED Expansion Pack

Neptune Downward Low Voltage LED Expansion Pack

Lighting Accessories

Add ambiance to your outdoor space with easy to install lighting.



LED Under Rail Light Strip

Size: 68" & 92" 
Color: 




3" LED Under Rail Light

Size: 3" with 10" lead wire
Color: 



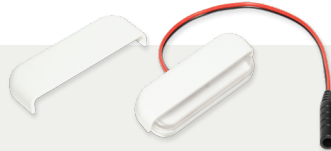
LED Dome Side Light

Size: 2.75" x 1.344"
9" lead wire
Color: 




LED Flush Deck Light - Frosted Acrylic

Size: .955" (diameter) x .685" (depth) 9" lead wire




LED Stair/Side Light with Covers

Size: 1.130" x 3.223"
Color: 



Ornamental Low Voltage Side Light

Size: 1.5"
Color: 

Power Supply and Wiring Harnesses

(Works with the low voltage LED lights above and with the low voltage LED post caps on page 36 & 37)



50 Watt Power Supply with Photo Eye, Timer and Remote



12 Watt Power Supply with Photo Eye



12 Watt Dimmer Switch (includes remote control)



2' Harness Connector



5' Harness Connector



7' Harness Connector



9' Harness Connector



5 Output Splitter



2 Output Splitter

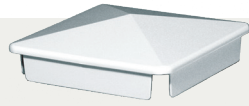
Traditional Post Caps

Enhance your look with architectural detail and style.



External

Size: 3", 3.5", 4", 5", 6" & 6.5"
(6.5" only available in white)
Color:



Internal

Size: 4" & 5"
Color:



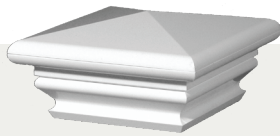
Gothic

Size: 3.5", 4" & 5"
Color:



Ball

Size: 4" & 5"
Color:



Federation

Size: 4", 5" & 6"
Color:



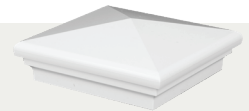
Cape May

Size: 4", 5" & 6"
Color:



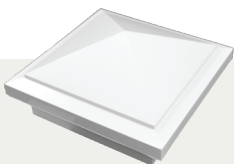
New England

Size: 4", 5", 6" & 6.5"
(6.5" only available in white)
Color:



Neptune

Size: 4", 5" & 6"
Color:



Haven

Size: 4", 5" & 6"
Color:



Coachman

Size: 5"
Color:



Horse Head

Size: 5"
Color:



Ornamental

Size: 2.5", 3", 4" (4" - Black only)
Color:



- *1 - Straight Railing is tested in accordance with ICC-ES Standards - Report ESR-4954
- *2 - Straight Railing is tested in accordance with ASTM D70032 Standards - PEI Report 6414
- *3 - Straight Railing is tested in accordance with ICC-ES Standards - Intertek Report 200115007SHF & 210422012SHF

durables[®]

WSR-DURFULL-2024

Purchaser has the sole responsibility to determine whether Durables[®] products comply with applicable codes and are appropriate for the intended use. The purchaser and installer should review the intended use of the products with a licensed professional engineer to determine code compliance and the intended use.

