



VINYL FENCING & RAILING


ALUMINUM FENCING & RAILING

LED LIGHTING

**durables**<sup>®</sup>

# WORTH THE WEIGHT!

## A letter from the president:

When I first started in the vinyl fencing industry over 25 years ago, it was nearly impossible to tell one vinyl fence from the next. However, like everything else over the years, others have gone to great lengths to make their products cheaper, primarily by using less vinyl. In turn, making the material thinner. At Durables, we still manufacture the same high quality, made in the USA, heavy duty vinyl fencing and railing that we did 25 years ago. In fact, our products can be up to 50% heavier/thicker than the competition. When comparing the quality and durability of vinyl fencing, it's important to consider panel weight. Thicker material means a heavier, stronger product. Simply look for the  symbol throughout this brochure to compare the weight of any other panel on the market to one of our panels and you'll immediately see the Durables difference.

At Durables®, the only thing stronger than our products is the service that comes with them.™. We believe that Great Experiences Matter, we want every step from the first call to the completion of your projects to be a great experience. We made a decision a long time ago to stand by our values and only offer strong, durable products that are guaranteed to last. We back that guarantee up with our limited lifetime warranty and product support.

Sincerely,



Brad Halley  
President

**THICKER VINYL =  HEAVIER WEIGHT = SUPERIOR DURABILITY**

Vinyl available in White, Tan, Khaki, Gray, Coastal\* or Cedar \*



Aluminum Fencing available in Black



Aluminum Railing available in Textured White or Textured Black



\* Indicates our Woodgrain fencing

# Fencing and railing that's built to last

- All vinyl fencing and railing made in the USA
- Unique customization available
- High impact resistant
- Low maintenance
- Thick, heavy-duty vinyl
- Won't chip, rot or crack
- Lifetime implementation support
- Limited Lifetime Warranty

**WE STAND BEHIND  
EVERYTHING WE  
MAKE, AND WE'LL  
BE HERE FOR YOU  
BEFORE, DURING  
AND AFTER YOUR  
PURCHASE.**



# WE TAKE PRIDE IN MANUFACTURING PREMIUM QUALITY FENCING AND RAILING THAT ARE ENVIRONMENTALLY FRIENDLY



Manufactured from PVC, 100% BPA free

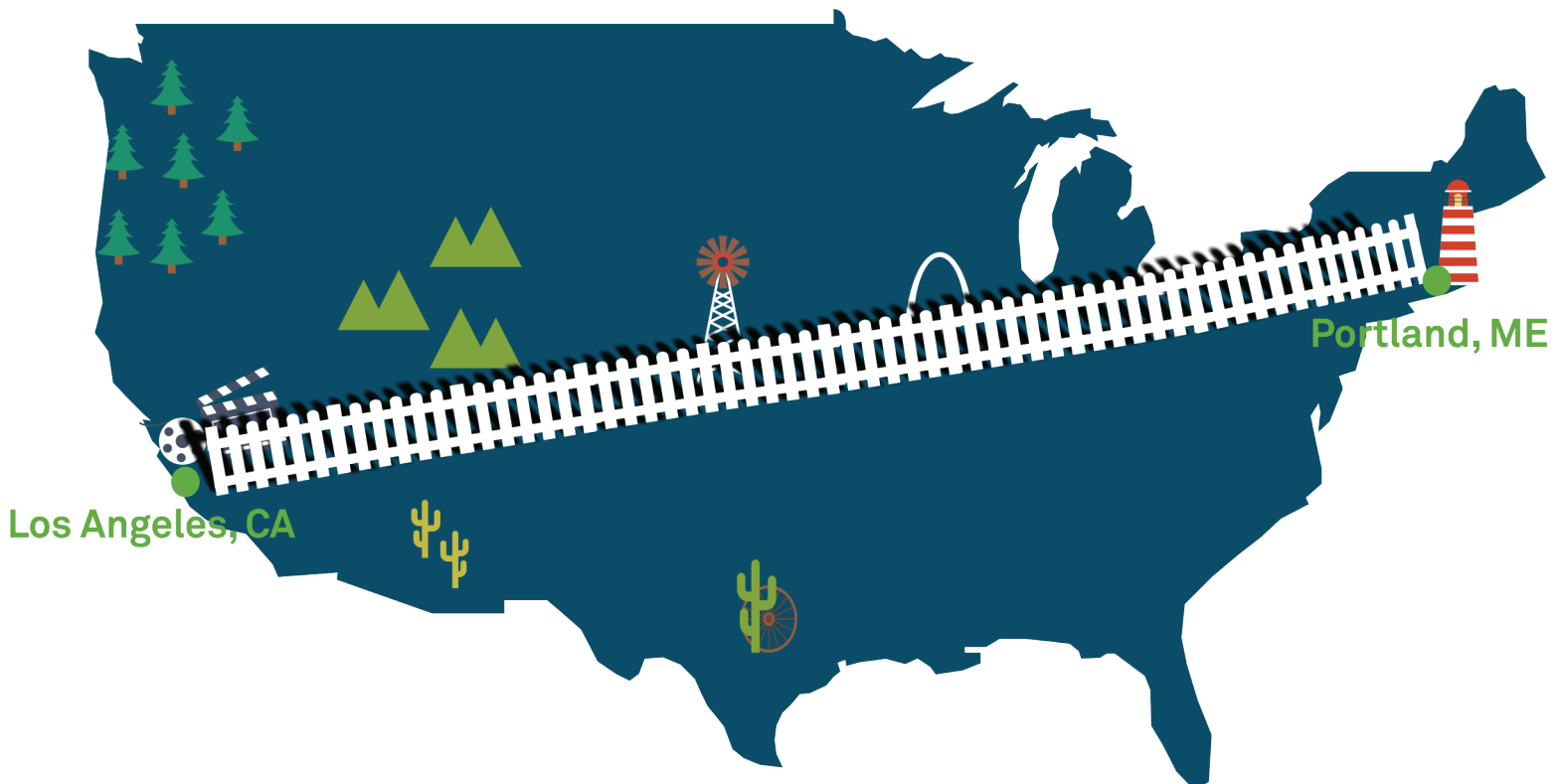


Made from 85% recycled material



Extruded with a closed loop water system

By using recycled materials, we have kept more than 50 million pounds of plastic out of landfills. Enough to put a Durables picket fence from Portland, Maine to Los Angeles, California.



# Durables Woodgrain

Introducing the latest addition to Durables: Woodgrain vinyl fencing and railing. Combining the look of wood with the durability and strength of vinyl, this product is now available in two stunning options – Coastal and Cedar. Elevate any outdoor space with this classic touch. Crafted with the same quality Durables vinyl, this fencing solution ensures both style and resilience. Easy to maintain, you'll never need to paint, stain or seal; just spray with water to clean.

## Coastal



### Available Styles:

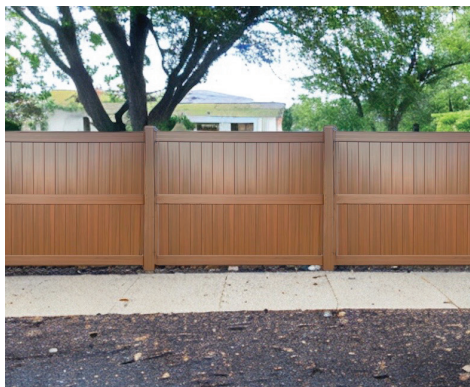
Ashforth, Townsend, 2-Rail, 3-Rail & 4-Rail Horse Fence, Amherst Railing

## Cedar



### Available Styles:

Newport, Townsend, Canterbury, 2-Rail, 3-Rail & 4-Rail Horse Fence, Amherst Railing



# Privacy Fencing



The perfect backdrop to lush garden plants or lively backyard parties, our privacy fencing offers both seclusion and sophistication. Providing maximum privacy and requiring minimal maintenance, we offer a wide variety of styles from traditional to contemporary to complement virtually any architectural style. To ensure superior strength and durability, the bottom rail is reinforced with aluminum.

**All of our privacy fences 6 feet tall and below can be installed to withstand wind gusts of up to 130 mph.**

## Premium

Our Durables Premium style privacy fences feature a 6" picket with .060 tongue and groove



### The Ashforth®

Height: 4', 5' & 6'  
Width: 6' & 8'  
Picket Style: 7/8" x 6"  
Tongue & Groove .060"  
Color:



### The Canterbury™

Height: 5', 6', 7' & 8'  
Width: 6' & 8'  
Picket Style: 7/8" x 6"  
Tongue & Groove .060"  
Color:



### The Townsend™

Height: 5', 6', 7' & 8'  
Width: 6' & 8'  
Picket Style: 7/8" x 6"  
Tongue & Groove .060"  
(accents 3/4" round black aluminum)  
Color:



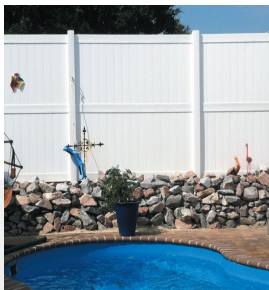
### The Briston™

Height: 5', 6', 7' & 8'  
Width: 6' & 8'  
Picket Style: 7/8" x 6"  
Tongue & Groove .060"  
(accents 1.25" x 1.25")  
Color:



### The Portsmouth™

Height: 5', 6', 7' & 8'  
Width: 6' & 8'  
Picket Style: 7/8" x 6"  
Tongue & Groove .060"  
(accents 7/8" x 1.5")  
Color:



### The Newport™

Height: 6', 7' & 8'  
Width: 6' & 8'  
Picket Style: 7/8" x 6"  
Tongue & Groove .060"  
Color:



### The Turnbridge®

Height: 5', 6', 7' & 8'  
Width: 6' & 8'  
Picket Style: 7/8" x 6"  
Tongue & Groove .060"  
(accents 7/8" x 1.5")  
Color:



<sup>1</sup> Average weight noted is for a 6'x8' panel.

## Classic

Our Durables Classic style privacy fences feature a wide-board 11.3" picket with .055" tongue and groove.



### The Wendell™

Height: 4', 5', 6', 7', 8'  
 Width: 6' & 8'  
 Picket Style: 7/8" x 11.3"  
 Tongue & Groove .055"  
 Color:



### The Winchester™

Height: 5', 6', 7', 8'  
 Width: 6' & 8'  
 Picket Style: 7/8" x 11.3"  
 Tongue & Groove .055"  
 Color:



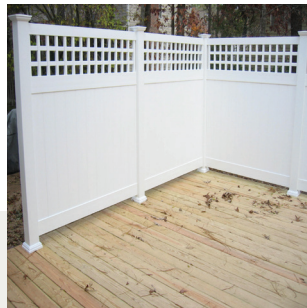
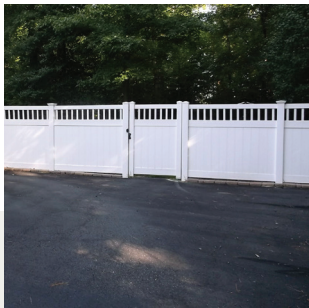
### The Florence™

Height: 6', 7', 8'  
 Width: 6' & 8'  
 Picket Style: 7/8" x 11.3"  
 Tongue & Groove .055" (accents  
 3/4" round black aluminum)  
 Color:



### The Edith™

Height: 6', 7', 8'  
 Width: 6' & 8'  
 Picket Style: 7/8" x 11.3"  
 Tongue & Groove .055"  
 (accents 7/8" x 1.5")  
 Color:



### The Edmonton™

Height: 6' & 8'  
 Width: 6' & 8'  
 Picket Style: 7/8" x 11.3"  
 Tongue & Groove .055"  
 (accents 7/8" x 1.5")  
 Color:



### The Cyrus™

Height: 6', 7', 8'  
 Width: 6' & 8'  
 Picket Style: 7/8" x 11.3"  
 Tongue & Groove .055"  
 (accents 1.25" x 1.25")  
 Color:



# Pool Fencing



Surround your patio, pool or lawn with one of our eye-catching pool fences. These attractive designs add a sense of style to any landscape. While perfect around pools, our pool fencing also looks great in any area of your yard. Our exclusive manufacturing process ensures that all of our vinyl products are resistant to water and humidity for lasting beauty. Our pool style gates include self-closing hinges and a pool safety latch. Plus, the bottom rail is reinforced with aluminum to ensure superior strength.

A beautiful finish that always looks new and resists water and humidity.



## The Waldston™

Height: 4' & 5'(w/ Mid-Rail)  
 Width: 6' & 8'  
 Picket Style: 7/8" x 3"  
 (3.7" picket spacing)  
 Color:



## The Gillingham™

Height: 4' & 5'(w/ Mid-Rail)  
 Width: 6' & 8'  
 Picket Style: 7/8" x 1.5"  
 (3.7" picket spacing)  
 Color:



## The Stanton™

Height: 4' & 5'(w/ Mid-Rail)  
 Width: 6' & 8'  
 Picket Style: 7/8" x 3"  
 (1.7" picket spacing)  
 Color:



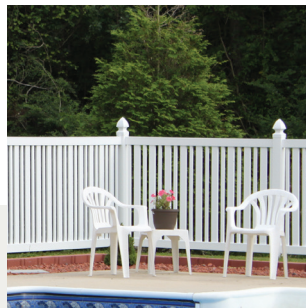
## The Harwich™

Height: 4' & 5'(w/ Mid-Rail)  
 Width: 6' & 8'  
 Picket Style: 7/8" x 1.5"  
 (1.7" picket spacing)  
 Color:



## The Cargill™

Height: 4' & 5'(w/ Mid-Rail)  
 Width: 6' & 8'  
 Picket Style: 7/8" x 3" &  
 7/8" x 1.5" alternating  
 (3.7" picket spacing)  
 Color:



## The Austell™

Height: 4' & 5'(w/ Mid-Rail)  
 Width: 6' & 8'  
 Picket Style: 7/8" x 3" &  
 7/8" x 1.5" alternating  
 (1.7" picket spacing)  
 Color:



## The Reading™

Height: 4' & 5'(w/ Mid-Rail)  
 Width: 6' & 8'  
 Picket Style: 7/8" x 3"  
 (0.6" picket spacing)  
 Color:







# Semi-Privacy Fencing

Our semi-privacy fencing offers just the right amount of seclusion for homeowners who want privacy without complete isolation. The pickets used in our semi-privacy fences slide through the routed rails for a true multi-dimensional look. The superior strength and durability of our fence are due in part to the fact that the bottom rail is reinforced with an aluminum insert.

Just the right amount of seclusion and style.



## The Milton®

Height: 5' & 6'  
 Width: 6' & 8'  
 Picket Style: 7/8" x 3"  
 (7/8" picket spacing)  
 Color:



## The Harlow®

Height: 5' & 6'  
 Width: 6' & 8'  
 Picket Style: 7/8" x 3"  
 & 7/8" x 1.5" alternating  
 (7/8" picket spacing)  
 Color:



## The Grenada™

Height: 5' & 6'  
 Width: 6' & 8'  
 Picket Style: 7/8" x 6"  
 (7/8" picket spacing)  
 Color:



## The Weldon™

Height: 5' & 6'  
 Width: 6' & 8'  
 Picket Style: 7/8" x 3"  
 & 7/8" x 6" alternating  
 (7/8" picket spacing)  
 Color:



## The Fairfax™

Height: 6'  
 Width: 8'  
 Picket Style: 7/8" x 3"  
 horizontal  
 (0.9" picket spacing)  
 Color:



## The Marlow™

Height: 5' & 6'  
 Width: 6' & 8'  
 Picket Style: 7/8" x 6"  
 (7/8 picket spacing)  
 Color:



Color Options: White:  Tan:  Khaki:

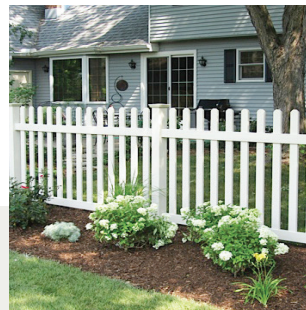
<sup>1</sup>Average weight noted is for a 6'x8' panel.



# Picket Fencing

Our classic picket fencing can dramatically change the look of your yard, adding beauty and warmth to the landscape. From simple straight-top to decorative scalloped-top designs, you'll find a wide selection of styles to suit your tastes. Plus, with a Durables® fence, you are assured years of durable performance and maintenance-free satisfaction.

A simple solution that adds ornamental style to your landscape.



## The Burton™

Height: 3', 4' & 5'  
 Width: 6' & 8'  
 Picket Style: 7/8" x 3"  
 Picket Caps: Dogear or Spade (3" picket spacing)  
 Bottom Rail: 1.5" x 5.5"  
 Color:

35 lb<sup>1</sup>

## The Grantham™

Height: 3', 4' & 5'  
 Width: 6' & 8'  
 Picket Style: 7/8" x 3"  
 Picket Caps: Dogear or Spade (3" picket spacing)  
 Bottom Rail: 1.5" x 5.5"  
 Color:

35 lb<sup>1</sup>

## The Murton™

Height: 3', 4' & 5'  
 Width: 6' & 8'  
 Picket Style: 7/8" x 3"  
 Picket Caps: Dogear or Spade (3" picket spacing)  
 Bottom Rail: 2" x 3.5"  
 Color:

36 lb<sup>1</sup>

## The Darlington™

Height: 3', 4' & 5'  
 Width: 6' & 8'  
 Picket Style: 7/8" x 3"  
 Picket Caps: Dogear or Spade (3" picket spacing)  
 Bottom Rail: 2" x 3.5"  
 Color:

36 lb<sup>1</sup>



## The Sudbury™

Height: 3', 4' & 5'  
 Width: 6' & 8'  
 Picket Style: 7/8" x 3"  
 Picket Caps: Dogear or Spade (1.7" picket spacing)  
 Bottom Rail: 2" x 3.5"  
 Color:

41 lb<sup>1</sup>

## The Rochdale™

Height: 3', 4' & 5'  
 Width: 6' & 8'  
 Picket Style: 7/8" x 3"  
 Picket Caps: Dogear or Spade (1.7" picket spacing)  
 Bottom Rail: 2" x 3.5"  
 Color:

41 lb<sup>1</sup>

## The Milano™

Height: 3' & 4'  
 Width: 6' & 8'  
 Picket Style: 1.5" x 1.5"  
 Picket Caps: Spade (2" picket spacing)  
 Bottom Rail: 2" x 6"  
 Color:

45 lb<sup>1</sup>

Picket Fencing continued on next page >>



## The Preston™

Height: 3', 4' & 5'  
 Width: 6' & 8'  
 Picket Style: 7/8" x 1.5"  
 Picket Caps: Spade  
 (3.7" picket spacing)  
 Bottom Rail: 2" x 3.5"  
 Color:



## The Stanley™

Height: 3', 4' & 5'  
 Width: 6' & 8'  
 Picket Style: 7/8" x 1.5"  
 Picket Caps: Spade  
 (3.7" picket spacing)  
 Bottom Rail: 2" x 3.5"  
 Color:



## The Durham™

Height: 3', 4' & 5'  
 Width: 6' & 8'  
 Picket Style: 7/8" x 1.5"  
 Picket Caps: Spade  
 (1.7" picket spacing)  
 Bottom Rail: 2" x 3.5"  
 Color:



## The Ashborne™

Height: 3', 4' & 5'  
 Width: 6' & 8'  
 Picket Style: 7/8" x 1.5"  
 Picket Caps: Spade  
 (1.7" picket spacing)  
 Bottom Rail: 2" x 3.5"  
 Color:



## The Classic™

Height: 3' & 4'  
 Width: 6' & 8'  
 Picket Style: 1.5" x 1.5"  
 Picket Caps: Spade  
 (2" picket spacing)  
 Bottom Rail: 2" x 6"  
 Color:





# Horse Fencing

Our horse fencing provides a physical barrier that is visible and safe for horses and livestock. It defines property boundaries, adds value to your estate, is low maintenance and offers superior impact resistance. Choose from elegant styles of durable vinyl fencing paired with best-in-class customer service and lifetime implementation support.

Beautiful, durable and top-grade quality.



## 2 Rail

Post: 5" x 5" square post  
 Post Length: 5' & 6'  
 Rail Spacing: 11"  
 Rail Size: 1.5" x 5.5"  
 Color:



## 3 Rail

Post: 5" x 5" square post  
 Post Length: 6.5', 7' & 7.5'  
 Rail Spacing: 11"  
 Rail Size: 1.5" x 5.5"  
 Color:



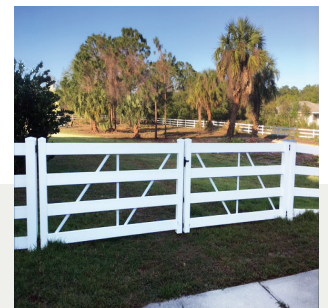
## 4 Rail

Post: 5" x 5" square post  
 Post Length: 7', 7.5' & 8'  
 Rail Spacing: 9"  
 Rail Size: 1.5" x 5.5"  
 Color:



## Cross Buck

Post: 5" x 5" square post  
 Post Length: 7', 7.5' & 8'  
 Rail Size: 1.5" x 5.5"  
 Color:



## 2-Rail Diamond Rail™

Post: 5" x 5" square post  
 Post Length: 5' & 6'  
 Rail Size: 3"x3"  
 Rail Spacing: 11"  
 Color:   
 (Matching gate unavailable)

## 3-Rail Diamond Rail™

Post: 5" x 5" square post  
 Post Length: 5' & 6'  
 Rail Size: 3"x3"  
 Rail Spacing: 11"  
 Color:   
 (Matching gate unavailable)

## Single Gate

Sizes: Up to 8' wide  
 Hardware: Commercial grade stainless steel powder-coated black  
 Color:

## Double Gate

Sizes: Up to 16' wide, 2 gates, latch in the center  
 Hardware: Commercial grade stainless steel powder-coated black; includes 2 drop rods  
 Color:

Gates are available in kit form to match Durables® Horse Fencing.



## Bottom Rail Reinforcement

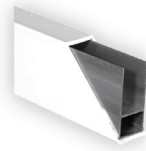
Providing superior strength and durability.

Most of our fence styles come with an metal insert in the bottom rail to ensure maximum strength and lasting durability.

### Bottom Rail Reinforcements



Metal  
"I" Channel



Metal  
"H" Channel



## Fence Gates

Blending optimal function and long-term performance.

You'll find matching gates for all of our fences that are designed with function and long-term performance in mind. We use the best gate hardware in the industry. Manufactured with rust-free, high-tech engineered polymer and stainless steel components, our gate locks, latches and hinges have a limited lifetime warranty.



Our gate post inserts add extra strength and stability to your gate to ensure years of uninterrupted gate operation.



# Vinyl Fence Posts

Strong, durable and maintenance-free.

Manufactured from the highest grade materials, our fence posts are the strongest, most durable, low maintenance fence posts you'll find anywhere.



## Blank Post

Post Width: 4" x 4" & 5" x 5"  
Post Height: 72", 84", 96",  
105", 120" & 140"

Color:      
 



## End Post

Post Width: 4" x 4" & 5" x 5"  
Post Height: 72", 84", 96",  
105", 120" & 140"

Color:      
 



## Line Post

Post Width: 4" x 4" & 5" x 5"  
Post Height: 72", 84", 96",  
105", 120" & 140"

Color:      
 



## Corner Post

Post Width: 4" x 4" & 5" x 5"  
Post Height: 72", 84", 96",  
105", 120" & 140"

Color:      
 



## 3-Way Post

Post Width: 4" x 4" & 5" x 5"  
Post Height: 72", 84", 96",  
105", 120" & 140"

Color:      
 



## Gate End Post

Post Width: 4" x 4" & 5" x 5"  
Post Height: 72", 84", 96",  
105", 120" & 140"

Color:        
(Metal insert included)



## Gate Blank Post

Post Width: 4" x 4" & 5" x 5"  
Post Height: 72", 84", 96",  
105", 120" & 140"

Color:        
(Metal insert included)



## Fast 2K

Size: 32.8 oz  
FAST 2K is a more convenient  
alternative to concrete for  
setting fence posts.

Note: Posts are custom routed to match each specific style of fence.  
For example, posts for the Augusta fence will have 3 route holes.

\*140" post is only available in 5" x 5" post size

# U-mounts

Custom installation made easy.

Available in: White, Tan or Khaki (unless noted) Replace the "X" in the product code with the selected color option:

- White= W
- Tan= T
- Khaki= K
- Gray= G



1.5" x 5.5" U-mount  
AXBR-UMOUNT-1.5X5.5



2" x 3.5" U-mount  
AXBR-UMOUNT-2X3.5



2" x 6" U-mount  
AXBR-UMOUNT-2X6



1.5" x 5.5" External U-mount  
AXBR-UMOUNTEXT-1.5X5.5

Fasteners sold separately.

# Post Hole Covers

Providing a clean look to your finished project.



1.5" x 5.5" Post Hole Cover  
AXCP-CVR-1.5X5.5



2" x 3.5" Post Hole Cover  
AXCP-CVR-1.75X3.5



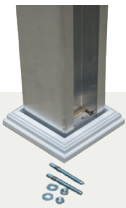
Hinged Screw Cap  
AXCP-SCREWCAP  
(fits a #10 pan head screw)



Self Tapping Screw  
AMFA-SCREWTAP-1.0SS

# Mounts

Simplify your post installation.



5" x 5" x 54" Concrete Mount  
AXPT-CMOUNT-5X54  
(includes mounting hardware and post skirt)



4" x 4" x 36" Concrete Mount  
AXPT-CMOUNT-4X36  
(includes mounting hardware and post skirt- can extend to 42")

# DURABLES RAILING SYSTEMS: THE BEST CHOICE FOR STRENGTH AND DURABILITY

AVAILABLE IN A RANGE OF ATTRACTIVE COLORS

EASY TO MAINTAIN

FULLY CUSTOMIZABLE

IMPACT- AND WEATHER-RESISTANT

CODE COMPLIANT

**FREE SHIPPING**

A MINIMUM ORDER APPLIES



# Classic Vinyl Railing

The best choice for strong & durable railing.



## The Waltham™

Color:

Rail: 2" x 3.5" top & bottom rail

Railing Height: 36" & 42" (bottom rail 2" from the ground)

Spindle Style: .875" x 1.5" Rectangular Spindle

Length: 4', 6' & 8' straight; 6' & 8' stair

Metal Inserts:

Top Rail Insert – included

Bottom Rail Insert – optional

Stair Rail–Top Rail Insert – included

Bottom Rail Insert – optional

IRC<sup>1</sup>

Brackets Included

## The Brighton™

Color:

Rail: T-Rail top rail & 2" x 3.5" bottom rail

Railing Height: 36" & 42" (bottom rail 2" from the ground)

Spindle Style: .875" x 1.5" Rectangular Spindle

Length: 4', 6' & 8' straight; 6' & 8' stair

Metal Inserts:

Top Rail Insert – included

Bottom Rail Insert – optional

Stair Rail–Top Rail Insert – included

Bottom Rail Insert – optional

IRC<sup>1</sup>

Brackets Included



## The Hudson

Color:

Rail: T-Rail top rail & 2" x 3.5" bottom rail

Railing Height: 36" & 42" (bottom rail 2" from the ground)

Spindle Style: .75" Black Round Aluminum

Length: 4', 6' & 8'

Stair Rail Length: 6' & 8'

Metal Inserts:

Top Rail Insert – included

Bottom Rail Insert – included

Stair Rail–Top Rail Insert – included

Bottom Rail Insert – included

IRC<sup>1</sup>

Brackets Included

*\*The brackets included with the classic stair railing are designed for angles of 28° to 42°.*

Color Options: White:  Tan:  Khaki:

*<sup>1</sup>Railing height noted is the installed height.*

# Premium Vinyl Railing

Attractive designs manufactured from the highest quality vinyl, up to 50% stronger than other brands.



## The Manchester™ Railing

Color:

Rail: 2" x 3.5" top & bottom rail

Railing Height: 36" & 42" (bottom rail 2" from the ground)

Spindle Style: 1.5" Square Spindle

Length: 4', 6' & 8' straight; 6' & 8' stair

Aluminum Inserts:

Top Rail Insert–included

Bottom Rail Insert–optional

Stair Rail–top & bottom rail inserts are included

IRC<sup>1</sup> & IBC<sup>1</sup>

Brackets Included

## The Harrington™ Railing

Color:

Rail: T-Rail top rail & 2" x 3.5" bottom rail

Railing Height: 36" & 42" (bottom rail 2" from the ground)

Spindle Style: 1.5" Square Spindle

Length: 4', 6', 8' & 10' straight; 6' & 8' stair

Aluminum Inserts:

Top Rail Insert–included

Bottom Rail Insert–optional

Stair Rail–top & bottom rail inserts are included

IRC<sup>1</sup> & IBC<sup>1</sup>

Brackets Included



## The Westport™ Railing

Color:

Rail: 2" x 3.5" top & bottom rail

Railing Height: 36" & 42" (bottom rail 2" from the ground)

Spindle Style: 1.5" Colonial Spindle

Length: 4', 6' & 8' straight; 6' & 8' stair

Aluminum Inserts:

Top Rail Insert–included

Bottom Rail Insert–optional

Stair Rail–top & bottom rail inserts are included

IRC<sup>1</sup> & IBC<sup>1</sup>

Brackets Included

## The Ashington™ Railing

Color:

Rail: T-Rail top rail & 2" x 3.5" bottom rail

Railing Height: 36" & 42" (bottom rail 2" from the ground)

Spindle Style: 1.5" Colonial Spindle

Length: 4', 6', 8' & 10' straight; 6' & 8' stair

Aluminum Inserts:

Top Rail Insert–included

Bottom Rail Insert–optional

Stair Rail–top & bottom rail inserts are included

IRC<sup>1</sup> & IBC<sup>1</sup>

Brackets Included



### The Bradford™ Railing

Color:

Rail: T-Rail top rail & 2" x 3.5" bottom rail

Railing Height: 36" & 42" (bottom rail 2" from the ground)

Spindle Style: .75" Black Square Aluminum Spindle

Length: 4', 6', 8' & 10' straight; 6' & 8' stair

Aluminum Inserts:  
 Top Rail Insert–included  
 Bottom Rail Insert–included  
 Stair Rail–top & bottom rail inserts are included  
 IRC<sup>1</sup> & IBC<sup>1</sup>  
 Brackets Included



### The Kirklees™ Railing

Color:

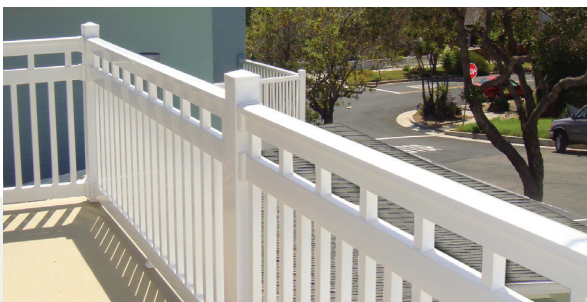
Rail: T-Rail top rail & 2" x 3.5" bottom rail

Railing Height: 36" & 42" (bottom rail 2" from the ground)

Spindle Style: .75" Black Round Aluminum Spindle

Length: 4', 6', 8' & 10' straight; 6' & 8' stair

Aluminum Inserts:  
 Top Rail Insert–included  
 Bottom Rail Insert–included  
 Stair Rail–top & bottom rail inserts are included  
 IRC<sup>1</sup> & IBC<sup>1</sup>  
 Brackets Included



### The Dorset™ Railing

Color:

Rail: T-Rail top rail & 2" x 3.5" bottom and mid rail

Railing Height: 42" (bottom rail 2" from the ground)

Spindle Style: 1.5" Square Spindle

Length: 4', 6', 8' & 10' straight

Aluminum Inserts:  
 Top Rail Insert–included  
 Bottom Rail Insert–optional  
 Stair Rail–N/A  
 IRC<sup>1</sup> & IBC<sup>1</sup>  
 Brackets Included



### The Franklin™ Railing

Color:

Rail: T-Rail black top rail & 2" x 3.5" white bottom rail

Railing Height: 36" & 42" (bottom rail 2" from the ground)

Spindle Style: .75" Black Round Aluminum

Length: 6', 8' & 10' straight, 6' & 8' stair

Aluminum Inserts:  
 Top Rail Insert–included  
 Bottom Rail Insert–included  
 Stair Rail–included  
 IRC<sup>1</sup> & IBC<sup>1</sup>  
 Brackets Included

*\*The brackets included with the premium stair railing are designed for angles of 30° to 40°.*



### The Amherst™ Railing

Color:

Rail: 2" x 3.5" top & bottom rail

Railing Height: 36" & 42" (bottom rail 2" from the ground)

Spindle Style: .75 Black Round Aluminum Spindle

Length: 4', 6' & 8' straight, 6' & 8' stair

#### Aluminum Inserts:

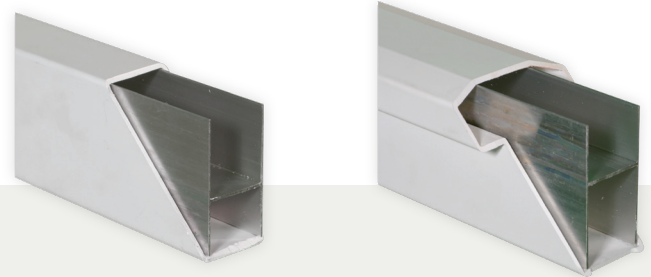
Top Rail Insert–included

Bottom Rail Insert–included

Stair Rail–N/A

IRC<sup>1</sup> & IBC<sup>1</sup>

Brackets Included



### Aluminum Insert (2" x 3.5" & T-Rail)

The aluminum inserts needed to meet testing requirements are included with each railing kit. Additional aluminum inserts are available for custom installations.

Size: 2" x 3.5" x 48"

Size: 2" x 3.5" X 72"

Size: 2" x 3.5" X 96"

Size: 2" x 3.5" X 120"

# Deck Board Railing

Our premium grade vinyl railing with a decorative top rail accent.



## The Bexley™ Deck Board Railing

Deck board not included- match to your specific deck

Color:

Rail: 2" x 3.5" top & bottom rail

Railing Height: 36" & 42" (bottom rail 2" from the ground)

Spindle Style: 1.5" Square Spindle

Length: 4', 6' & 8' straight; 6' & 8' stair

Aluminum Inserts:

Top Rail Insert-included

Bottom Rail Insert-optional

Stair Rail-top & bottom rail inserts are included

IRC<sup>1</sup> & IBC<sup>1</sup>

Brackets Included

## The Hastings™ Deck Board Railing

Deck board not included- match to your specific deck

Color:

Rail: 2" x 3.5" top & bottom rail

Railing Height: 36" & 42" (bottom rail 2" from the ground)

Spindle Style: 1.5" Colonial Spindle

Length: 4', 6' & 8' straight; 6' & 8' stair

Aluminum Inserts:

Top Rail Insert-included

Bottom Rail Insert-optional

Stair Rail-top & bottom rail inserts are included

IRC<sup>1</sup> & IBC<sup>1</sup>

Brackets Included



## The Halton™ Deck Board Railing

Deck board not included- match to your specific deck

Color:

Rail: 2" x 3.5" top & bottom rail

Railing Height: 36" & 42" (bottom rail 2" from the ground)

Spindle Style: .75" Square Aluminum Spindle

Length: 4', 6' & 8' straight; 6' & 8' stair

Aluminum Inserts:

Top Rail Insert-included

Bottom Rail Insert-included

Stair Rail-top & bottom rail insert - included

IRC<sup>1</sup> & IBC<sup>1</sup>

Brackets Included

## The Warrington™ Deck Board Railing

Deck board not included- match to your specific deck

Color:

Rail: 2" x 3.5" top & bottom rail

Railing Height: 36" & 42" (bottom rail 2" from the ground)

Spindle Style: .75" Round Aluminum Spindle

Length: 4', 6' & 8' straight; 6' & 8' stair

Aluminum Inserts:

Top Rail Insert-included

Bottom Rail Insert-included

Stair Rail-top & bottom rail inserts are included

IRC<sup>1</sup> & IBC<sup>1</sup>

Brackets Included

# Vinyl Railing Gates

Blending optimal function and long-term performance, with top-of-the-line hardware.



## .875" x 1.5" Rectangular Spindle

Style: Waltham & Brighton

Color:

Rail: 2" x 3.5" or T-Rail top rail

Height: 36" & 42" (bottom rail 2" from the ground)



## 1.5" Square Spindle

Style: Manchester, Harrington & Bexley

Color:

Rail: 2" x 3.5" or T-Rail top rail

Height: 36" & 42" (bottom rail 2" from the ground)



## 1.5" Colonial Spindle

Style: Westport, Ashington & Hastings

Color:

Rail: 2" x 3.5" or T-Rail top rail

Height: 36" & 42" (bottom rail 2" from the ground)



## 1.5" Square Spindle

Style: Dorset

Color:

Rail: T-Rail top rail

Height: 42" (bottom rail 2" from the ground)



## .75" Square Aluminum Spindle

Style: Bradford & Halton

Color:

Rail: T-Rail top rail

Height: 36" & 42" (bottom rail 2" from the ground)



## .75" Round Aluminum Spindle

Style: Kirklees, Warrington & Hudson

Color:

Rail: T-Rail top rail

Height: 36" & 42" (bottom rail 2" from the ground)

Gate kits include commercial grade polyvinyl hardware:



Key-lockable latch



Self-closing hinges

# Wraps

For use around new or existing wood posts.

Available in: White, Tan or Khaki (unless noted) Replace the "X" in the product code with the selected color option:

- White= W
- Tan= T
- Khaki= K



## Smooth Vinyl Post Wrap

Size: 4" x 4" x 96"– AXPT-WRAP-4X96

Size: 4" x 4" x 120"– AXPT-WRAP-4X120

Size: 6" x 6" x 96"– AXPT-WRAP-6X96

Size: 6" x 6" x 120"– AXPT-WRAP-6X120

\*Installed size is 0.25" larger than post wrap size

\*For use with Adjustable Post Skirt only

## Fluted Vinyl Post Wrap (White only)

Size: 4" x 4" x 102"– AWPT-WRAPFLUTELBP-4X102

Size: 4" x 4" x 120"– AWPT-WRAPFLUTELBP-4X120

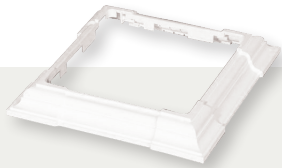
Size: 6" x 6" x 102"– AWPT-WRAPFLUTELBP-6X102

Size: 6" x 6" x 120"– AWPT-WRAPFLUTELBP-6X120

Size: 8" x 8" x 102"– AWPT-WRAPFLUTELBP-8X102

# Wrap Skirts

Decorative trim at the base of each post provides a finished look.



## 4-Piece Adjustable Post Skirt

Size: ADJUSTABLE–AXPT-WRAPTRIM4PC-ADJ

\*Fits a 3", 3.5", 4", 5", 6" & 6.5" post

# Vinyl Sleeves

Attractive covers that fit over our post mounts.

Available in: White, Tan or Khaki (unless noted) Replace the "X" in the product code with the selected color option:

- White= W
- Tan= T
- Khaki= K



## Vinyl Blank Post Sleeve Kit

(Includes external post cap and post skirt)

- Size: 4" x 4" x 39"-WXR-POSTKIT-4X39
- Size: 4" x 4" x 45"-WXR-POSTKIT-4X45
- Size: 4" x 4" x 54"-WXR-POSTKIT-4X54



## Vinyl Blank

- Size: 4" x 4" x 39"-LXPT-BLANK-4X39
- Size: 4" x 4" x 45"-LXPT-BLANK-4X45
- Size: 4" x 4" x 72"-LXPT-BLANK-4X72
- Size: 4" x 4" x 84"-LXPT-BLANK-4X84
- \*More sizes available, and will fit over 4"x4" treated wood



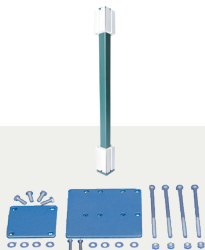
## Vinyl Newel: Colonial

(White only)

- Size: 4" x 4" x 48"-LWPT-NEWELCOL-4X48

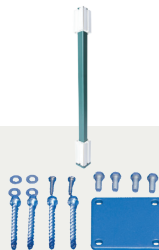
# Mounts

Simplify your post installation.



## Railing Post Mount with Wood Fasteners

- AMPT-HDMOUNTWD-4X36
- AMPT-HDMOUNTWD-4X42



## Railing Post Mount with Concrete Fasteners

- AMPT-HDMOUNTCC-4X36
- AMPT-HDMOUNTCC-4X42

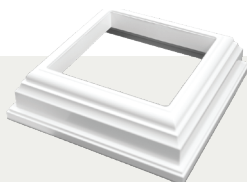


## General Mount

NOT FOR COMMERCIAL APPLICATION  
(mounting hardware sold separately)  
AMPT-GENMOUNT-4

# Sleeve Skirts

Decorative trim at the base of each post provides a finished look.



## Post Skirt

- Size: 4" x 4"-AXPT-SKIRT-4
- Size: 5" x 5"-AXPT-SKIRT-5
- Size: 6" x 6"-AXPT-SKIRT-6



## 2-Piece Federation Post Skirt

- Size: 4" x 4"-AXPT-SKIRT2PC-4
- Size: 5" x 5"-AXPT-SKIRT2PC-5
- Size: 6" x 6"-AXPT-SKIRT2PC-6

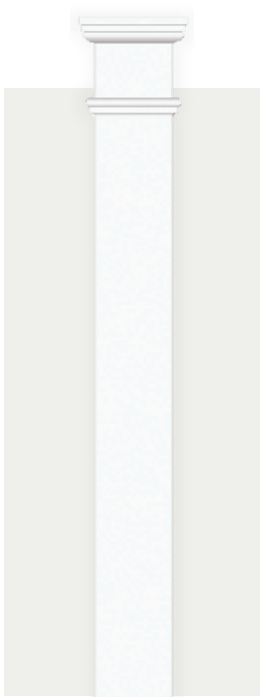


# Vinyl Columns

Supported by extruded aluminum for lightweight durability and superior strength.

Available in: White, Tan or Khaki (unless noted) Replace the "X" in the product code with the selected color option:

- White= W
- Tan= T
- Khaki= K

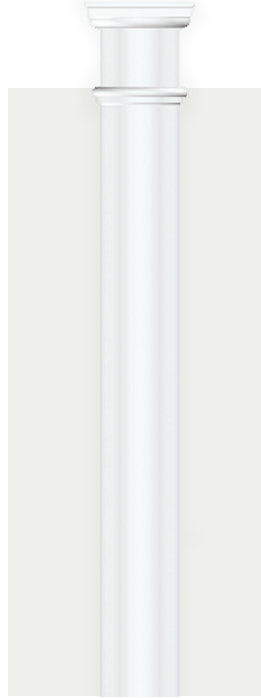


## Square Column

(White only)

Size: 8" x 8" x 96"  
LWPT-SQCOLKIT-8X96

Size: 8" x 8" x 120"  
LWPT-SQCOLKIT-8X120  
(tested load of 11,000 lb.)

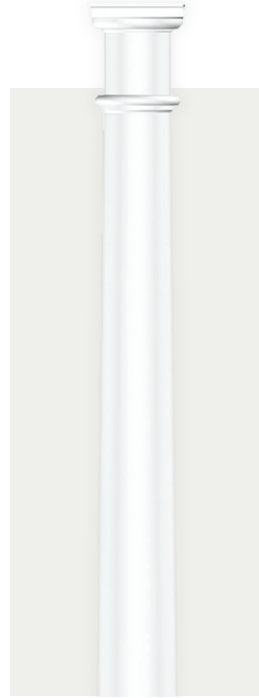


## Round Straight Column

(White only)

Size: 8" x 8" x 108"  
LWPT-RNDSTCOLKIT-108

(tested load of 18,000 lb.)



## Round Tapered Column

(White only)

Size: 8" x 8" x 108"  
LWPT-RNDTPCOLKIT-108

Size: 8" x 8" x 120"  
LWPT-RNDTPCOLKIT-120  
(tested load of 18,000 lb.)



## Colonial Structural

Size: 4" x 4" x 108"  
LXPT-PPCOL-4X108

Size: 5" x 5" x 108"  
LXPT-PPCOL-5X108  
(tested load of 11,000 lb.)



## Square Structural

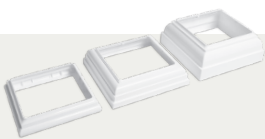
Size: 4" x 4" x 108"  
LXPT-PPSQ-4X108

Size: 5" x 5" x 108"  
LXPT-PPSQ-5X108

Size: 6" x 6" x 108"  
LXPT-PPSQ-6X108  
(tested load of 11,000 lb.)

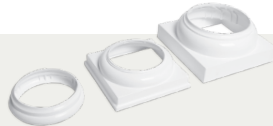
(Top & bottom skirts/trim kits are not included, but can be purchased separately)

## Trim Kits



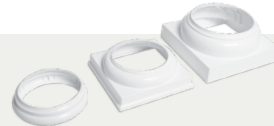
## Square Column

AWPT-BASE&COLLAR-8X8



## Round Straight Column

AWPT-BASE&COLLAR-RNDST



## Round Tapered Column

AWPT-BASE&COLLAR-RNDTP

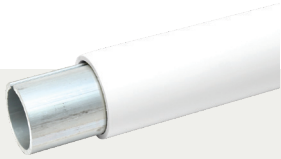
Use skirts on page 23 or 24 with the Colonial Structural and Square Structural columns.

# Secondary (ADA) Railing

All the parts you need for ADA-compliant installations.

Available in: White, Tan, Khaki & Black (unless noted) Replace the "X" in the model number with the selected color option:

- White= W
- Tan= T
- Khaki= K
- Black= B



**104" Rail with Stiffener**  
NXRA-ADARAIL-1.5X104



**Hand Rail Bracket Kit**  
NXRA-ADARAILBRK-1.5



**Straight Wall Return Kit**  
NXRA-ADASTRTN-1.5



**Bracket Wall Return Cover Plate (4/bag)**  
NXRA-ADACVRPLT-1.5



**Post Return**  
NXRA-ADAPTRTN-16.5X6



**End Loop**  
NXRA-ADALOOP-18X12



**90° Wall Return Kit w/Joiner**  
NXRA-ADAWALLJOIN-1.5



**90° Exterior Corner**  
NXRA-ADACORNER-1.5



**90° Exterior Corner w/Joiner**  
NXRA-ADACORNJOIN-1.5



**90° Interior Corner**  
NXRA-ADACORNERINS-1.5



**Straight Joiner (4/bag)**  
NMRA-ADASTJOIN-6



**Adjustable Joiner (4/bag)**  
NMRA-ADAJJOINADJ-1.5



**Joint Ring (4/bag)**  
NXRA-ADAJTRING-1.5



**Rail End Cap (4/bag)**  
NXCP-ADARAILEND-1.5



**External Adjustable Joiner with Male Ends and Joint Rings**  
NXRA-ADAEXADJOIN-1.5

All parts shown are available in both residential & commercial grade. Residential grade shown.

# Classic Brackets

Secure, sturdy brackets for Waltham, Brighton and Hudson railing.

Available in: White, Tan or Khaki (unless noted) Replace the "X" in the product code with the selected color option:

- White= W
- Tan= T
- Khaki= K



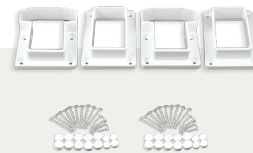
**2" x 3.5" 1-Piece  
Straight Kit**

AXBR-CVSTRGHTKIT-2X3.5



**2" x 3.5" 1-Piece  
Stair Kit**

AXBR-CVSTAIRKIT-2X3.5



**T-Rail & 2" x 3.5"  
1-Piece Straight Kit**

AXBR-CVSTRGHTKIT-TRAIL



**T-Rail & 2" x 3.5"  
1-Piece Stair Kit**




AXBR-CVSTAIRKIT-TRAIL

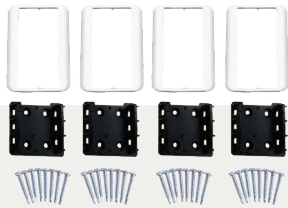
*\*Classic stair rail brackets are designed for angles of 28° to 42°.*

# Premium Brackets

Dependable accessories for our premium line of railing.

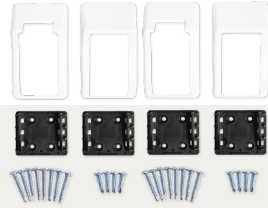
Available in: White, Tan or Khaki (unless noted) Replace the "X" in the product code with the selected color option:

-  White= W
-  Tan= T
-  Khaki= K



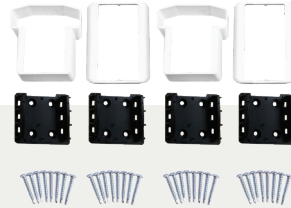
**2" x 3.5" 2-Piece Straight Kit**

AXBR-2PCSTRGHTKIT-2X3.5



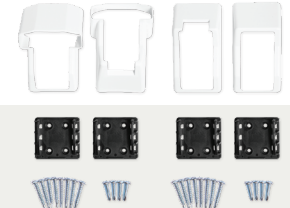
**2" x 3.5" 2-Piece Stair Kit**

AXBR-STAIRKIT-2X3.5



**T-Rail & 2" x 3.5" 2-Piece Straight Kit**

AXBR-STRGHTKIT-TRAIL



**T-Rail & 2" x 3.5" 2-Piece Stair Kit**

AXBR-2PCSTRGHTKIT-TRAIL

*\*Premium stair rail brackets are designed for angles of 30° to 40°.*



**Deck Board Clips**

AMBR-DECKCLIP-KIT



**Deck Board Stair Bracket Set**

AXBR-STAIRSETDB-2X3.5

# Classic and Premium Brackets

Universal accessories offer ultimate versatility.

Available in: White, Tan or Khaki (unless noted) Replace the "X" in the product code with the selected color option:

- White= W
- Tan= T
- Khaki= K



**2" x 3.5" Adjustable Straight Kit**

AXBR-WIZANGLE-2X3.5



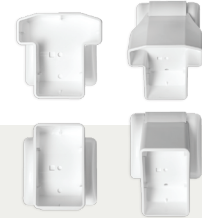
**T-Rail & 2" x 3.5" Adjustable Straight Kit**

AXBR-WIZANGLE-TRAIL



**2" x 3.5" Adjustable Stair Kit**

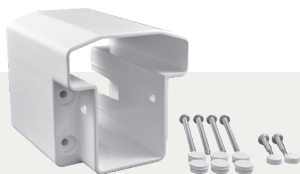
AXBR-WIZSTAIR-2X3.5



**T-Rail & 2" x 3.5" Adjustable Stair Kit**

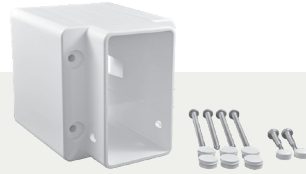
AXBR-WIZSTAIR-TRAIL

*\*Brackets above are designed for angles of 15° to 45°.*



**T-Rail Field Cut Bracket**

AXBR-FIELD-TRAIL



**2" x 3.5" Field Cut Bracket**

AXBR-FIELD-2X3.5



**45° Classic Bracket T-Rail Adapter**

AXBR-CV45ADAPTER-TRAIL



**45° Classic Bracket 2" x 3.5" Adapter**

AXBR-CV45ADAPTER-2X3.5

*\*Brackets above accommodate a vertical or horizontal custom angle.*

## Foot Blocks

For added strength when splitting a rail section.



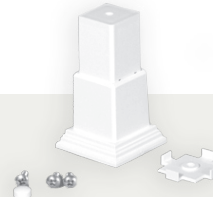
**8" Column Classic Bracket Adapter**

AXBR-CVCOLADAPTER-8



**8" Column Classic Stair Bracket Adapter**

AXBR-CVCOLSTAIRADP-8




**Premium Foot Block**

AXRA-FOOTBLOCK-1.5



**Classic Foot Block**

AXRA-CVFOOTBLOCK-1.5X1.5X8



# DURABLES ALUMINUM FENCING & RAILING:

LOW MAINTENANCE

PREMIUM QUALITY & DURABILITY

IMPACT- AND WEATHER-RESISTANT

**FREE SHIPPING**

A MINIMUM ORDER APPLIES

# Aluminum Fencing

A classy yet low-maintenance, economical fencing option.

Manufactured from the best aluminum in the industry, our aluminum fencing offers strength and security plus it looks great! Proven not to rust or corrode, aluminum fencing is the perfect addition to your yard.



## The Parma Aluminum Fencing

Height: 4' & 5'  
Width: 6'  
Gate Width: Single 4', 5' Double 8' & 10'  
Picket Style: Flat top  
Color:



## The Canton Aluminum Fencing

Height: 4' & 5'  
Width: 6'  
Gate Width: Single 4', 5' Double 8' & 10'  
Picket Style: Alternating spear flat top  
Color:



## The Beagle Aluminum Fence

Height: 4'  
Width: 6'  
Gate Width: Single: 4' Double: 8'  
Picket Style: Flat top  
Color:

## The Hamilton Aluminum Fencing

Height: 4.5'  
Width: 6'  
Gate Width: Single 4', 5' Double 8' & 10'  
Picket Style: Flat top & flush bottom  
Color:

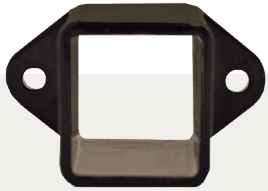
## The Canfield Aluminum Fencing

Height: 4'  
Width: 6'  
Gate Width: Single 4', 5' Double 8' & 10'  
Picket Style: Flat top & flush bottom  
Color:

# Aluminum Fencing Accessories

Expand your options with our matching fittings.

Black in stock. Additional colors available by special order.



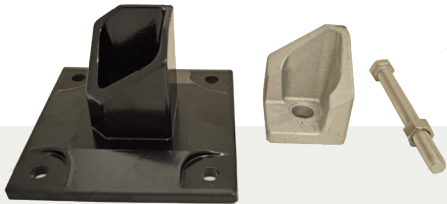
Residential Straight Rail End Bracket for Canfield  
1" side wall  
(Includes 3 #8-1" screws)



Commercial Straight Rail End Bracket for Canfield  
1.5" side wall  
(Includes 3 #8-1" screws)



Swivel Rail Bracket  
(Includes 3 #8-1" screws)



Floor Flange  
(fasteners not included)



Touch Up Paint



Screws  
#10-1" screws



End Post



Line Post



Corner Post



Gate End Post



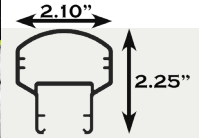
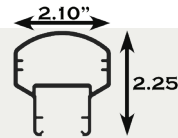
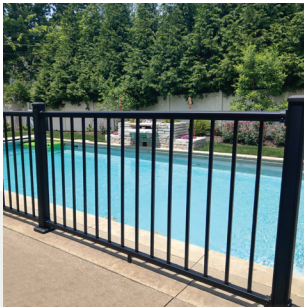
Gate Blank Post



# Aluminum Railing

An economical alternative to traditional wrought iron.

Offering a sleek, clean look, our premium quality aluminum railing is manufactured from the best aluminum in the industry. No matter what Mother Nature decides to throw at it, it will not cause excessive corrosion or rust.



## The Sterling

**Color:** Textured Black, Textured White

**Rail:** Bread-loaf molded top rail & 1.25" x 1.375" bottom rail

**Railing Height:** 36" & 42" (bottom rail 2" from the ground)

**Spindle Style:** .60" Square Spindles

**Length:** 6' & 8' straight; 6' & 8' stair

**IRC<sup>2</sup> & IBC<sup>2</sup>**

**Brackets Included**

(Stair brackets are designed for angles of 32° to 36°)

## The Dalton

**Color:** Textured Black

**Rail:** Bread-loaf molded top rail & 1.5" x 1.25" bottom rail

**Railing Height:** 36" & 42" (bottom rail 2" from the ground)

**Gate Width:** 60"

**Spindle Style:** .75" Square Spindles

**Length:** 6', 8' & 10' straight; 6' & 8' stair

**IRC<sup>3</sup> & IBC<sup>3</sup>**

**Brackets Included**

## The Columbia

**Color:** Textured Black

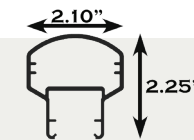
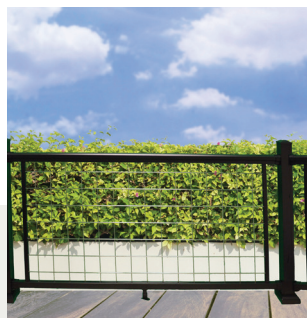
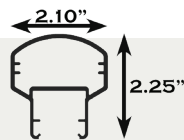
**Rail:** 2.25" x 2.10" Bread-loaf molded top rail & 1.5" x 1.25" bottom rail

**Railing Height:** 36" & 42" (bottom rail 2" from the ground)

**Spindle Style:** Silver aluminum rod

**Length:** 6' & 8' straight; 6' & 8' stair

**Brackets Included**



## The Princeton

**Color:** Textured Black

**Rail:** 2.25" x 2.10" Bread-loaf molded top rail & 1.5" x 1.25" bottom rail

**Railing Height:** 36" & 42" (bottom rail 2" from the ground)

**Spindle Style:** Black aluminum rod

**Length:** 6' & 8' straight; 6' & 8' stair

**Brackets Included**

## The Niles

**Color:** Textured Black

**Rail:** 2.25" x 2.10" Bread-loaf molded top rail & 1.5" x 1.25" bottom rail

**Railing Height:** 36" (bottom rail 2" from the ground)

**Spindle Style:** Mesh

**Length:** 6' & 8' straight; 6' stair

**Brackets Included**

*\*Railing height noted is the installed height.*

# Aluminum Railing Accessories

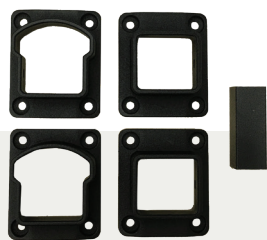
Expand your options with our matching fittings.



## Sterling Aluminum Railing Post Kit

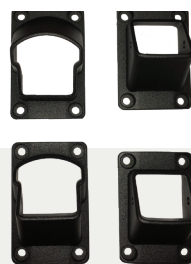
Includes post cap, 1-piece post skirt and base flange (fasteners not included).

Size: 2.5" x 2.5" x 39"  
2.5" x 2.5" x 45"  
2.5" x 2.5" x 54"



## Sterling Aluminum Railing Straight Brackets

(includes fasteners and foot block)



## Sterling Aluminum Railing Stair Brackets

(includes fasteners)



## Sterling Aluminum Railing Adjustable Brackets

(adjust vertically & horizontally and includes fasteners)



## Dalton Aluminum Railing Post Kit

Includes post cap, 2-piece post skirt and base flange (fasteners not included).

Size: 3" x 3" x 39"  
3" x 3" x 45"  
3" x 3" x 54"



## Dalton Aluminum Railing Straight Brackets

(includes fasteners and foot block)



## Dalton Aluminum Railing Universal Brackets

(includes fasteners)

# Secondary (ADA) Aluminum Railing



## Wall Return Aluminum Railing

Rail: 1.5" diameter  
Length: 4', 6' or 8'  
Attachment: (2) 90-degree wall returns, 8' includes additional middle mount  
Hardware: Wall mounts with wood fasteners  
Color:

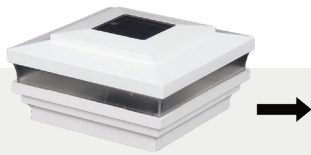


## Straight Aluminum Railing

Rail: 1.5" diameter  
Length: 4', 6' or 8'  
Attachment: (2) wall mounts, 8' includes additional middle mount  
Hardware: Wall mounts with wood fasteners  
Color:

# Solar Post Caps

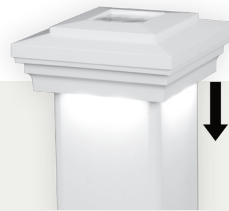
Enhance your look with architectural details and lighting.



Cape May Solar LED

Size: 4", 5" & 6"

Color:



Cape May Downward Solar LED

Size: 4" & 5"

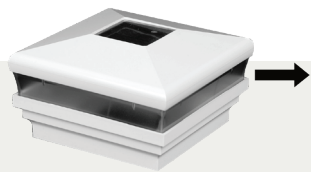
Color:



Classic Solar LED

Size: 3.5", 4" & 5"

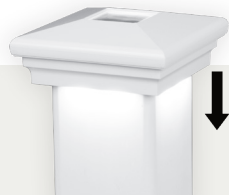
Color:



Neptune Solar LED

Size: 4", 5" & 6"

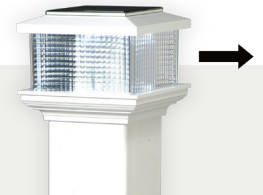
Color:



Neptune Downward Solar LED

Size: 4" & 5"

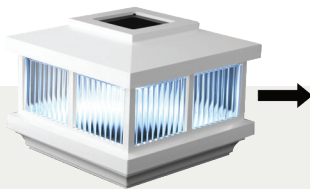
Color:



Galaxy Solar LED

Size: 3.5", 4" & 5"

Color:



Cambridge Solar LED

Size: 4", 5" & 6"

Color:

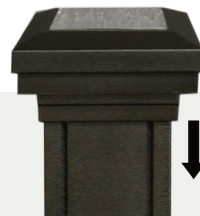
*\*Arrow indicates direction of light*



Ornamental Lens Solar LED

Size: 2.5" & 3"

Color: Textured Black & Textured White



Ornamental Downward Solar LED

Size: 2.5" & 3"

Color: Textured Black & Textured White

# LED Low Voltage Post Caps

Enhance your look with architectural details and lighting.

(All low-voltage LED post caps work with power supplies and wiring harnesses on page 38)



Cape May Low Voltage LED

Size: 4" & 5"

Color:



Starter packs include 6 caps, wiring & a low voltage adapter.



Cape May Downward Low Voltage LED

Size: 4" & 5"

Color:



Haven Low Voltage LED

Size: 4" & 5"

Color:



Cape May Low Voltage LED Starter Pack

Cape May Downward Low Voltage LED Starter Pack

Haven Low Voltage LED Starter Pack

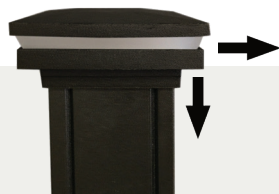
Expansion packs include 1 cap & wiring



Cape May Low Voltage LED Expansion Pack

Cape May Downward Low Voltage LED Expansion Pack

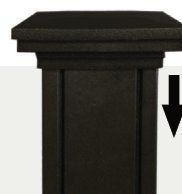
Haven Low Voltage LED Expansion Pack



Ornamental Combination Low Voltage LED

Size: 2.5" & 3"

Color:



Ornamental Downward Low Voltage LED

Size: 2.5" & 3"

Color:



Ornamental Lens Low Voltage LED

Size: 2.5" & 3"

Color:



Haven Downward Low Voltage LED

Size: 4" & 5"

Color:



Neptune Low Voltage LED

Size: 4" & 5"

Color:



Neptune Downward Low Voltage LED

Size: 4" & 5"

Color:

Starter packs include 6 caps, wiring & a low voltage adapter.



Haven Downward Low Voltage LED Starter Pack



Neptune Low Voltage LED Starter Pack



Neptune Downward Low Voltage LED Starter Pack

Expansion packs include 1 cap & wiring



Haven Downward Low Voltage LED Expansion Pack



Neptune Low Voltage LED Expansion Pack



Neptune Downward Low Voltage LED Expansion Pack

# Lighting Accessories

Add ambiance to your outdoor space with easy to install lighting.



LED Under Rail Light Strip

Size: 68" & 92"



3" LED Under Rail Light

Size: 3" with 10" lead wire  
Color:



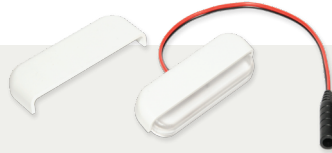
LED Dome Side Light

Size: 2.75" x 1.344"  
9" lead wire  
Color:



LED Flush Deck Light - Frosted Acrylic

Size: .955" (diameter) x .685" (depth) 9" lead wire



LED Stair/Side Light with Covers

Size: 1.130" x 3.223"  
Color:



Ornamental Low Voltage Side Light

Size: 1.5"  
Color:

# Power Supply and Wiring Harnesses

(Works with the low voltage LED lights above and with the low voltage LED post caps on page 36 & 37)



50 Watt Power Supply with Photo Eye, Timer and Remote



12 Watt Power Supply with Photo Eye



12 Watt Dimmer Switch (includes remote control)



2' Harness Connector



5' Harness Connector



7' Harness Connector



9' Harness Connector



5 Output Splitter



2 Output Splitter

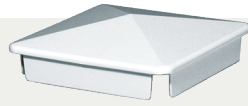
# Traditional Post Caps

Enhance your look with architectural detail and style.



**External**

Size: 3", 3.5", 4", 5", 6" & 6.5"  
(6.5" only available in white)  
Color:



**Internal**

Size: 4" & 5"  
Color:



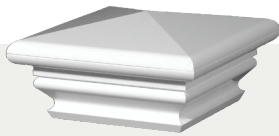
**Gothic**

Size: 3.5", 4" & 5"  
Color:



**Ball**

Size: 4" & 5"  
Color:



**Federation**

Size: 4", 5" & 6"  
Color:



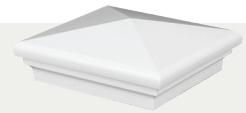
**Cape May**

Size: 4", 5" & 6"  
Color:



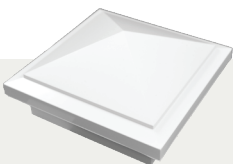
**New England**

Size: 4", 5", 6" & 6.5"  
(6.5" only available in white)  
Color:



**Neptune**

Size: 4", 5" & 6"  
Color:



**Haven**

Size: 4", 5" & 6"  
Color:



**Coachman**

Size: 5"  
Color:



**Horse Head**

Size: 5"  
Color:



**Ornamental**

Size: 2.5", 3", 4" (4" - Black only)  
Color:



- \*1 - Straight Railing is tested in accordance with ICC-ES Standards - Report ESR-4954
- \*2 - Straight Railing is tested in accordance with ASTM D70032 Standards - PEI Report 6414
- \*3 - Straight Railing is tested in accordance with ICC-ES Standards - Intertek Report 200115007SHF & 210422012SHF

# **durables**<sup>®</sup>

WSR-DURFULL-2024

Purchaser has the sole responsibility to determine whether Durables<sup>®</sup> products comply with applicable codes and are appropriate for the intended use. The purchaser and installer should review the intended use of the products with a licensed professional engineer to determine code compliance and the intended use.



Durables<sup>®</sup> is a federally registered trademark of USA Vinyl, LLC. ©2024 USA Vinyl, LLC.